



10025 Investment Dr, Ste 200
Knoxville, TN 37932-
www.tdstelecom.com

April 2, 2014

Mr. David Foster
Chief - Utility Division
Tennessee Regulatory Authority
500 Deaderick St.
Nashville, TN 37242

Re: TDS Telecom Market Regulation filing support

Dear Mr. Foster:

Enclosed you will find supporting documents for TDS Telecom operating companies: Concord Telephone Exchange, Inc., Humphreys County Telephone Company, Tellico Telephone Company and Tennessee Telephone Company move to Market Regulation in accordance with amended T.C.A Section 65-5-109 enacted May 21, 2009.

Please contact me with any questions at 865-671-4753 or
email:bruce.mottern@tdstelecom.com

Sincerely,

A handwritten signature in cursive script that reads "Bruce Mottern".

Bruce Mottern
Manager – State Government Affairs

RECEIVED

APR 07 2014

TN REGULATORY AUTHORITY
UTILITIES DIVISION

TDS Telecom – TN Market Regulation – Support for Filing

Concord – unified R1 rate

Tellico – unified R 1 rate

Humphreys County -

- Unified R1 rate
- cable provider = Benton & Humphreys County Cable

TN Tel –

Internet search of wireless and cable providers

TDS Market and NS Managers

TDS Telecom - Tennessee Telephone Company
Support for Market Regulation Filing
Demonstration of 2 non-affiliated telecommunications providers
As of December 16, 2013

LN	Exchange	Residential Rate	ResidentialA ccess Lines	Zip Code	AT&T Wireless	Verizon Wireless	Charter	
1	Clifton	\$ 13.00	755	38425	Yes	Yes	Yes	
2	Cornersville	\$ 13.00	708	37047	Yes	Yes	Yes	
3	Darden	\$ 13.00	351	38328	Yes	Yes	Yes	
4	Lobelville	\$ 13.00	1,123	37097	No	Yes	Yes	
5	Sardis	\$ 13.00	317	38371	Yes	Yes	Yes	
6	Collinwood	\$ 13.00	2,220	38450	Yes	Yes	Yes	
7	Decaturville	\$ 13.00	967	38329	Yes	Yes	Yes	
8	Halls	\$ 14.00	5,430	38040	N/A	N/A	N/A	Comcast
9	Linden	\$ 13.00	1,984	37096	No	Yes	Yes	
10	Lavergne	\$ 15.70	7,714	37086	N/A	N/A	N/A	Comcast
11	Mt. Juliet	\$ 15.70	12,095	37122	N/A	N/A	N/A	Comcast
12	Scotts Hill	\$ 13.00	1,442	38374	Yes	Yes		
13	Bruceton	\$ 13.00	783	38317	Yes	Yes	Yes	
14	Parsons	\$ 13.00	2,629	38363	Yes	Yes	Yes	
15	Waynesboro	\$ 13.00	2,699	38485	Yes	Yes	Yes	

Source: Internet search and TDS Market and NS Managers

Humphreys

AT&T Maps

Like 1,829 people like this. Sign Up
to see what your friends like.

199

[Print](#)

37134

[Return to search location](#)

Wireless Coverage Type

Domestic

Voice

Data

GoPhone® Pay As You Go /
Wireless Home Phone Prepaid

GoPhone® Pick Your Plan

International

Voice

Data

Zoom in on the map to see individual store
locations and store details.
[Discover Data](#)

Domestic Wireless Voice Coverage

This map shows wireless voice coverage in the United States, Puerto Rico and the U.S. Virgin Islands.

[Legend](#)

Your search

Best

Good

Moderate

Partner

[Learn more about
legend](#)

Requires 3G Handset

Map displays approximate coverage

[Learn more](#)New to AT&T? Get
started ...

- [Learn about 4G LTE](#)
- [Shop for a mobile phone](#)
- [Shop for a rate plan](#)
- [Shop for prepaid phones](#)



Discover more

- [Wireless support](#)
- [Android™ apps](#)



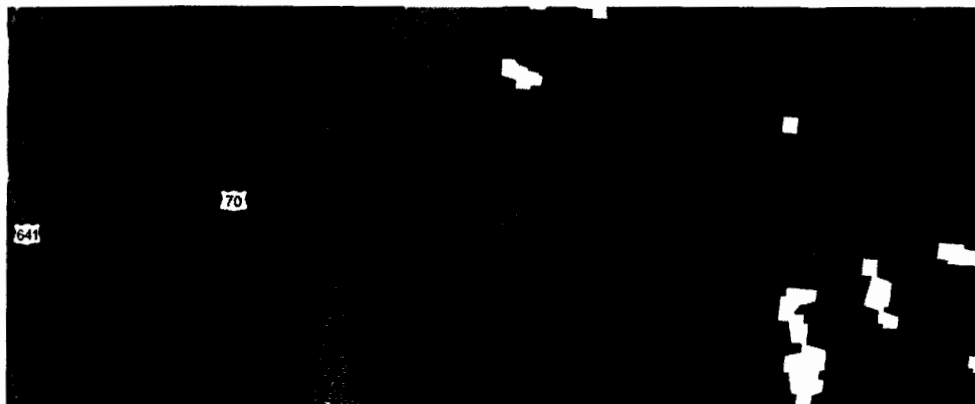
Recycle Phones

Return. Recycle. Reward.
Recycle your wireless
phones, smartphones,
batteries & accessories and
get rewarded.

Humphreys



Verizon Wireless Printer Friendly Coverage Map

Mapped Coverage
Voice and MessagingMapped Location
37134

Map Legend

Digital Coverage

Extended Digital Coverage

No Coverage

VZW Store

These Coverage Locator depictions apply to the following calling plans:

Share Everything, Nationwide Calling Plans, Mobile Broadband and Prepaid.

Voice roaming charges will apply in the Canada and Mexico coverage areas unless you subscribe to the Share Everything or Nationwide Plus Canada/Mexico Plan.

These Coverage Locator maps depict predicted and approximate wireless coverage. The coverage areas shown do not guarantee service availability, and may include locations with limited or no coverage. Even within a coverage area, there are many factors, including customer's equipment, terrain, proximity to buildings, foliage, and weather that may impact service. Some of the Coverage Areas include networks run by other carriers, the coverage depicted is based on their information and public sources, and we cannot ensure its accuracy.

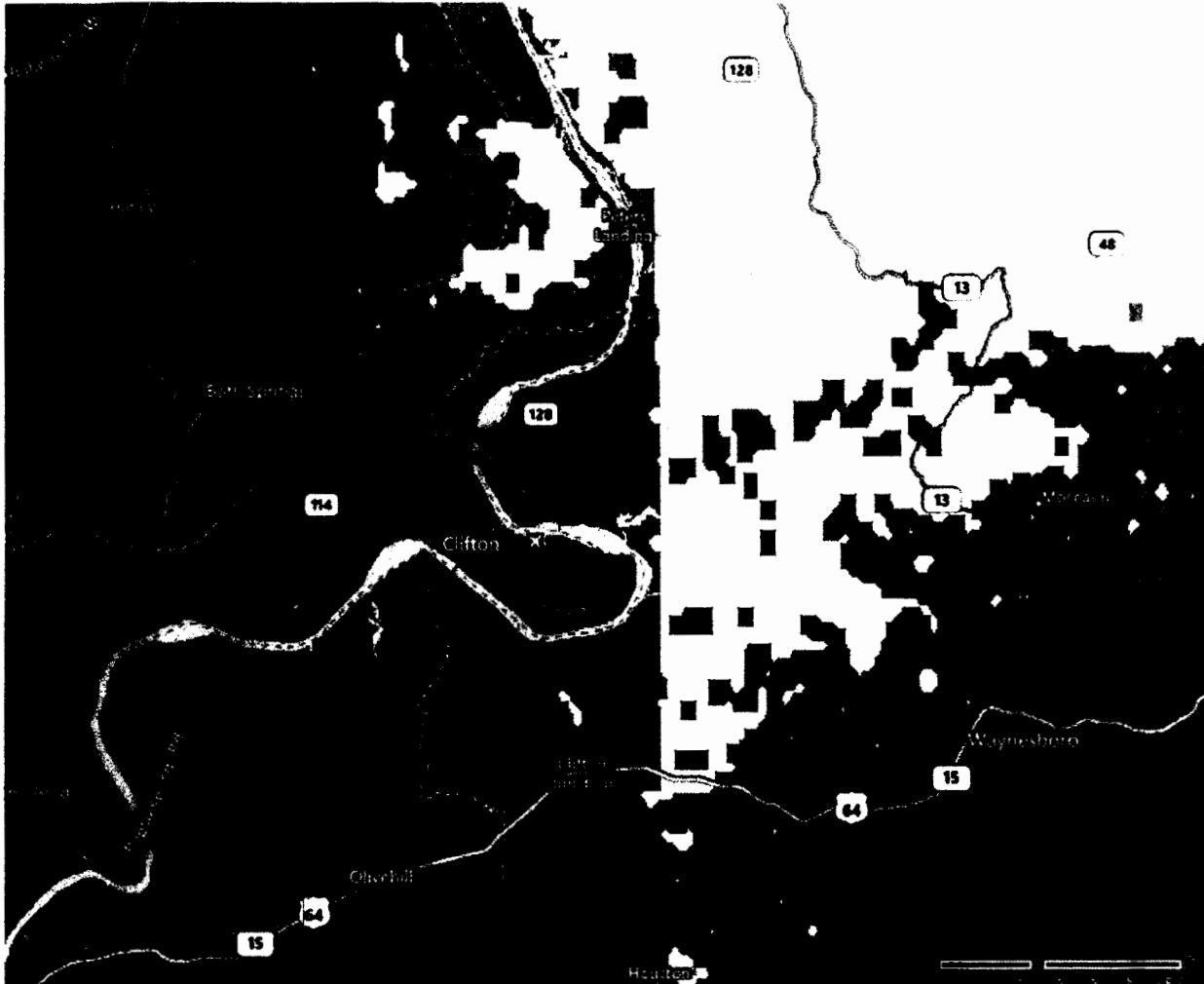
[Print](#)

CLIFTON

Map of 38425

[< Back to search results](#)**Domestic Wireless Voice Coverage**

This map shows wireless voice coverage in the United States, Puerto Rico and the U.S. Virgin Islands.



Legend



Your search

Best

Good

Moderate

Partner

Requires 3G Handset

Important Information About This Coverage Map

This coverage viewer provides a high-level approximation of wireless coverage. There are gaps in coverage that are not shown by this high-level approximation. Actual coverage may differ from map graphics and may be affected by terrain, weather, foliage, buildings and other construction, signal strength, high-usage periods, customer equipment, and other factors. AT&T does not guarantee coverage. Our coverage maps are not intended to show actual customer performance on the network, nor are they intended to show future network needs or build requirements inside or outside of existing AT&T coverage areas. Coverage maps also may include areas served by unaffiliated carriers and may depict licensed areas rather than an approximation of coverage. Charges will be based on the location of the site receiving and transmitting

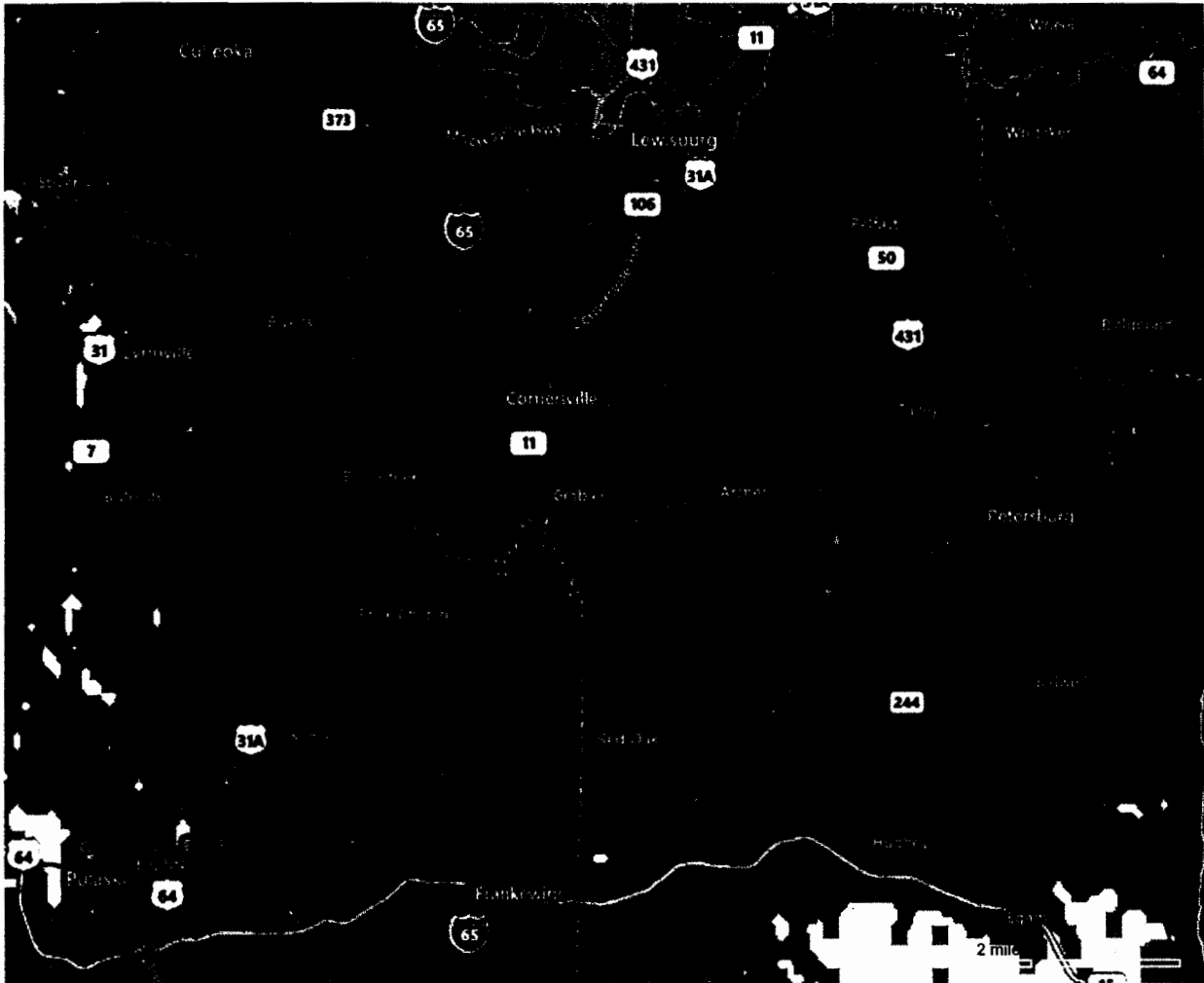

[Print](#)
Cornelsville

Map of 37047

[< Back to search results](#)

Domestic Wireless Voice Coverage

This map shows wireless voice coverage in the United States, Puerto Rico and the U.S. Virgin Islands.



Legend Your search Best Good Moderate Partner

Requires 3G Handset

Important Information About This Coverage Map

This coverage viewer provides a high-level approximation of wireless coverage. There are gaps in coverage that are not shown by this high-level approximation. Actual coverage may differ from map graphics and may be affected by terrain, weather, foliage, buildings and other construction, signal strength, high-usage periods, customer equipment, and other factors. AT&T does not guarantee coverage. Our coverage maps are not intended to show actual customer performance on the network, nor are they intended to show future network needs or build requirements inside or outside of existing AT&T coverage areas. Coverage maps also may include areas served by unaffiliated carriers and may depict licensed areas rather than an approximation of coverage. Charges will be based on the location of the site receiving and transmitting

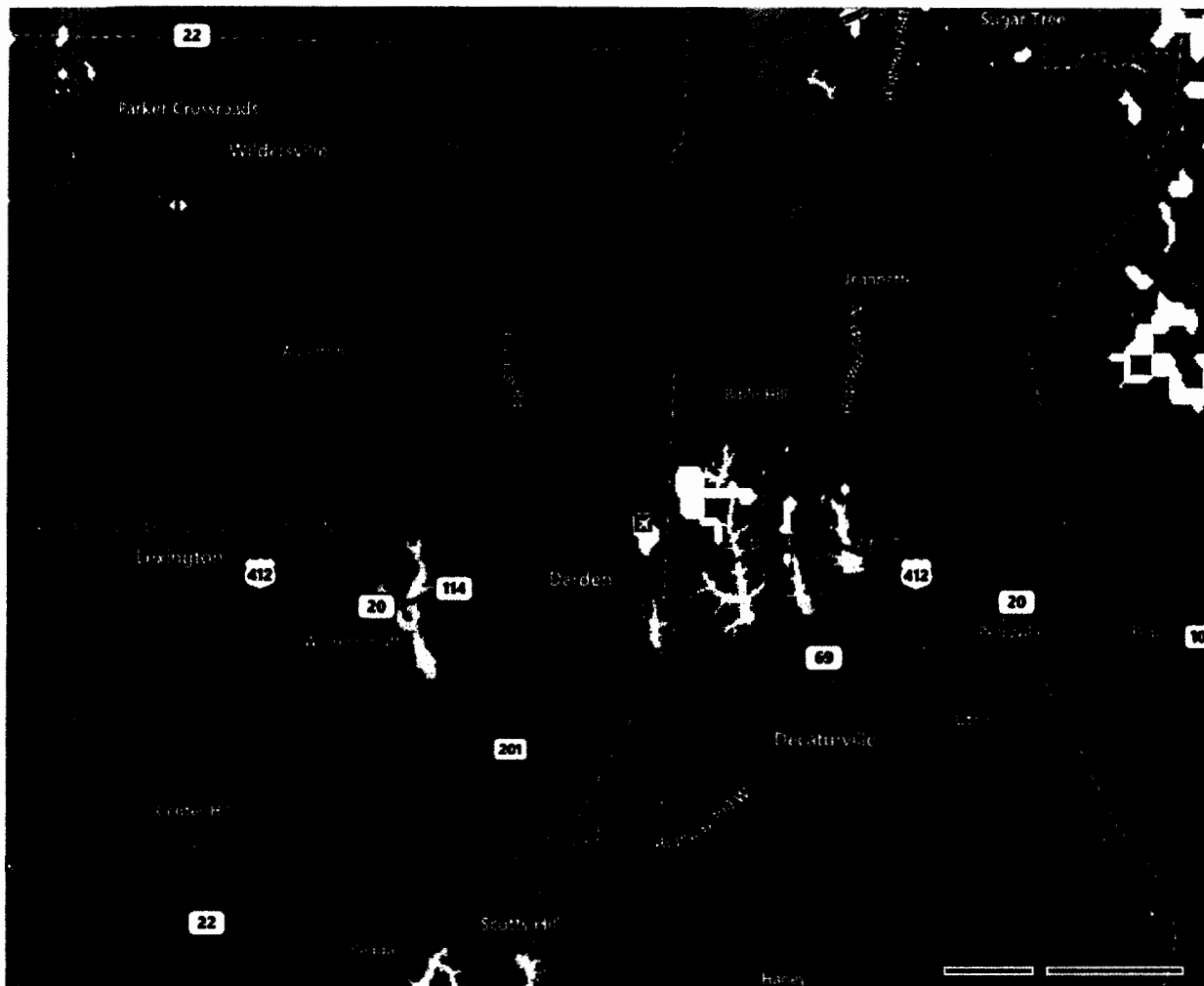
[Print](#)

DARDEN

Map of 38328

[< Back to search results](#)**Domestic Wireless Voice Coverage**

This map shows wireless voice coverage in the United States, Puerto Rico and the U.S. Virgin Islands.



Legend Your search Best Good Moderate Partner

Requires 3G Handset

Important Information About This Coverage Map

This coverage viewer provides a high-level approximation of wireless coverage. There are gaps in coverage that are not shown by this high-level approximation. Actual coverage may differ from map graphics and may be affected by terrain, weather, foliage, buildings and other construction, signal strength, high-usage periods, customer equipment, and other factors. AT&T does not guarantee coverage. Our coverage maps are not intended to show actual customer performance on the network, nor are they intended to show future network needs or build requirements inside or outside of existing AT&T coverage areas. Coverage maps also may include areas served by unaffiliated carriers and may depict licensed areas rather than an approximation of coverage. Charges will be based on the location of the site receiving and transmitting


[Print](#)

Map of 38371

SARDIS

[< Back to search results](#)

Domestic Wireless Voice Coverage

This map shows wireless voice coverage in the United States, Puerto Rico and the U.S. Virgin Islands.



Legend



Your search

Best

Good

Moderate

Partner

Requires 3G Handset

Important Information About This Coverage Map

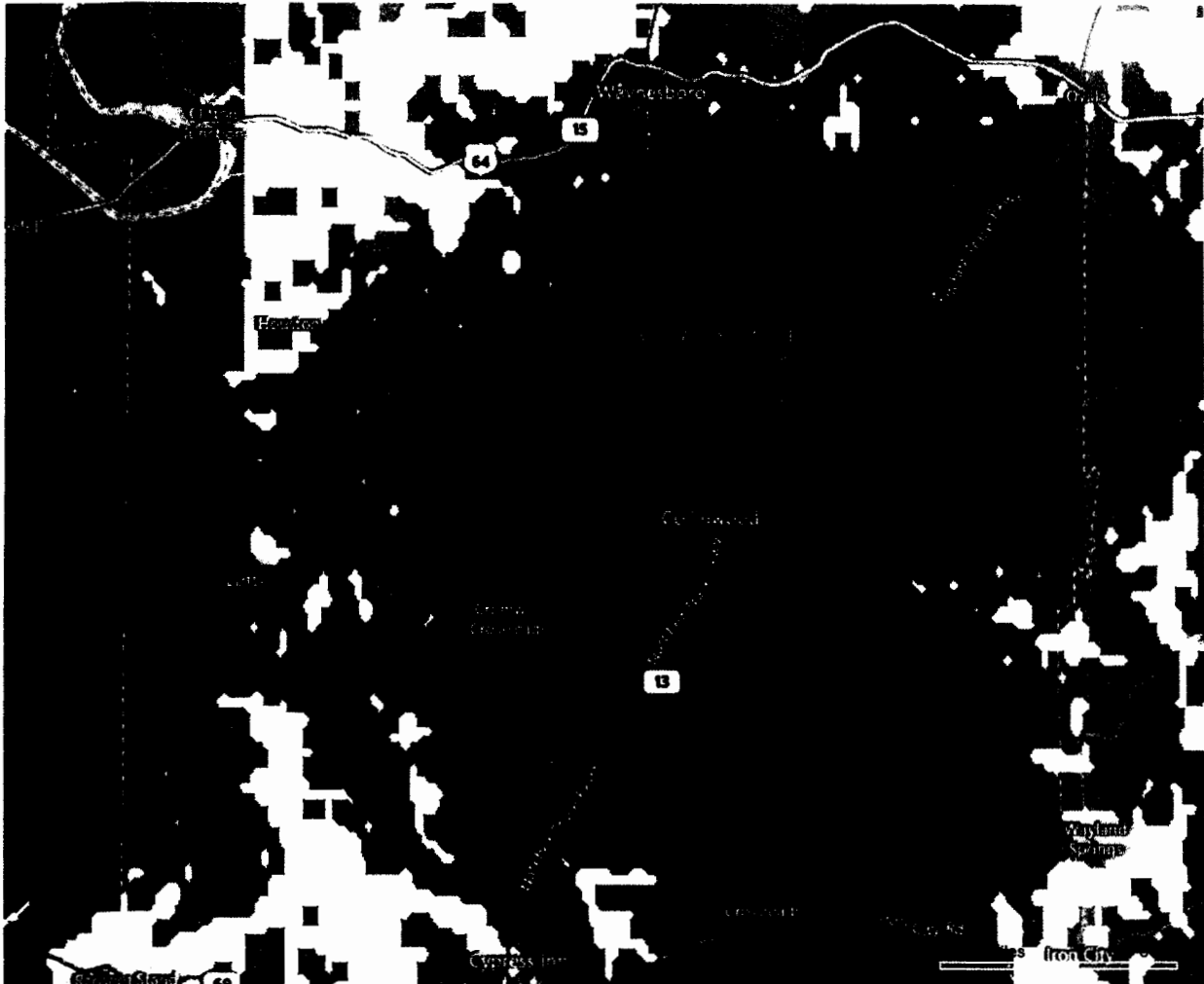
This coverage viewer provides a high-level approximation of wireless coverage. There are gaps in coverage that are not shown by this high-level approximation. Actual coverage may differ from map graphics and may be affected by terrain, weather, foliage, buildings and other construction, signal strength, high-usage periods, customer equipment, and other factors. AT&T does not guarantee coverage. Our coverage maps are not intended to show actual customer performance on the network, nor are they intended to show future network needs or build requirements inside or outside of existing AT&T coverage areas. Coverage maps also may include areas served by unaffiliated carriers and may depict licensed areas rather than an approximation of coverage. Charges will be based on the location of the site receiving and transmitting

[Print](#)*Collinwood*[< Back to search results](#)

Map of 38450

Domestic Wireless Voice Coverage

This map shows wireless voice coverage in the United States, Puerto Rico and the U.S. Virgin Islands.



Legend Your search Best Good Moderate Partner

Requires 3G Handset

Important Information About This Coverage Map

This coverage viewer provides a high-level approximation of wireless coverage. There are gaps in coverage that are not shown by this high-level approximation. Actual coverage may differ from map graphics and may be affected by terrain, weather, foliage, buildings and other construction, signal strength, high-usage periods, customer equipment, and other factors. AT&T does not guarantee coverage. Our coverage maps are not intended to show actual customer performance on the network, nor are they intended to show future network needs or build requirements inside or outside of existing AT&T coverage areas. Coverage maps also may include areas served by unaffiliated carriers and may depict licensed areas rather than an approximation of coverage. Charges will be based on the location of the site receiving and transmitting


[Print](#)

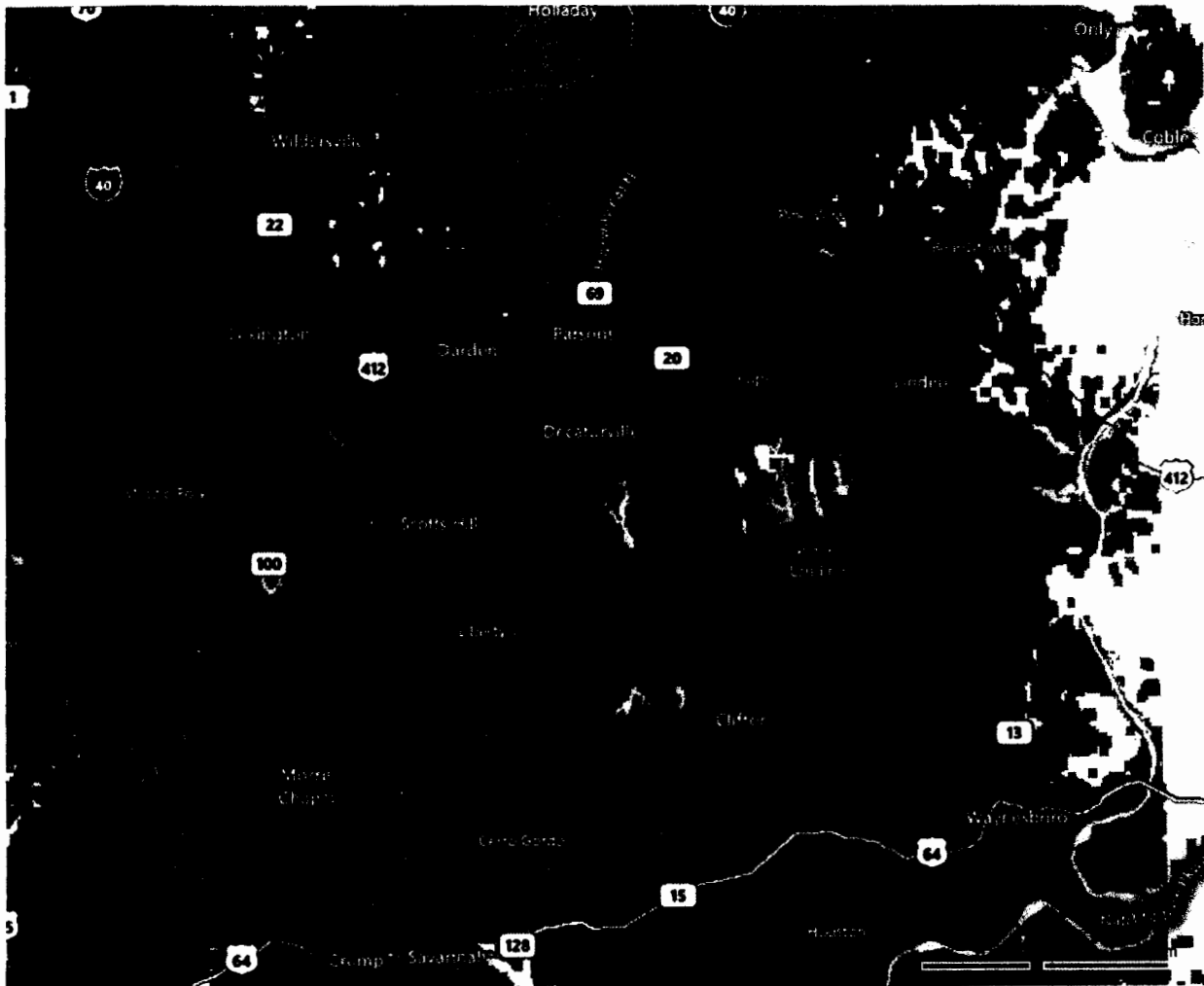
Map of 38329

Decaturville

[< Back to search results](#)

Domestic Wireless Voice Coverage

This map shows wireless voice coverage in the United States, Puerto Rico and the U.S. Virgin Islands.



Legend Your search Best Good Moderate Partner

Requires 3G Handset

Important Information About This Coverage Map

This coverage viewer provides a high-level approximation of wireless coverage. There are gaps in coverage that are not shown by this high-level approximation. Actual coverage may differ from map graphics and may be affected by terrain, weather, foliage, buildings and other construction, signal strength, high-usage periods, customer equipment, and other factors. AT&T does not guarantee coverage. Our coverage maps are not intended to show actual customer performance on the network, nor are they intended to show future network needs or build requirements inside or outside of existing AT&T coverage areas. Coverage maps also may include areas served by unaffiliated carriers and may depict licensed areas rather than an approximation of coverage. Charges will be based on the location of the site receiving and transmitting

[Print](#)

Map of 38374

Scotts Hill
< [Back to search results](#)

Domestic Wireless Voice Coverage

This map shows wireless voice coverage in the United States, Puerto Rico and the U.S. Virgin Islands.



Legend Your search Best Good Moderate Partner

Requires 3G Handset

Important Information About This Coverage Map

This coverage viewer provides a high-level approximation of wireless coverage. There are gaps in coverage that are not shown by this high-level approximation. Actual coverage may differ from map graphics and may be affected by terrain, weather, foliage, buildings and other construction, signal strength, high-usage periods, customer equipment, and other factors. AT&T does not guarantee coverage. Our coverage maps are not intended to show actual customer performance on the network, nor are they intended to show future network needs or build requirements inside or outside of existing AT&T coverage areas. Coverage maps also may include areas served by unaffiliated carriers and may depict licensed areas rather than an approximation of coverage. Charges will be based on the location of the site receiving and transmitting

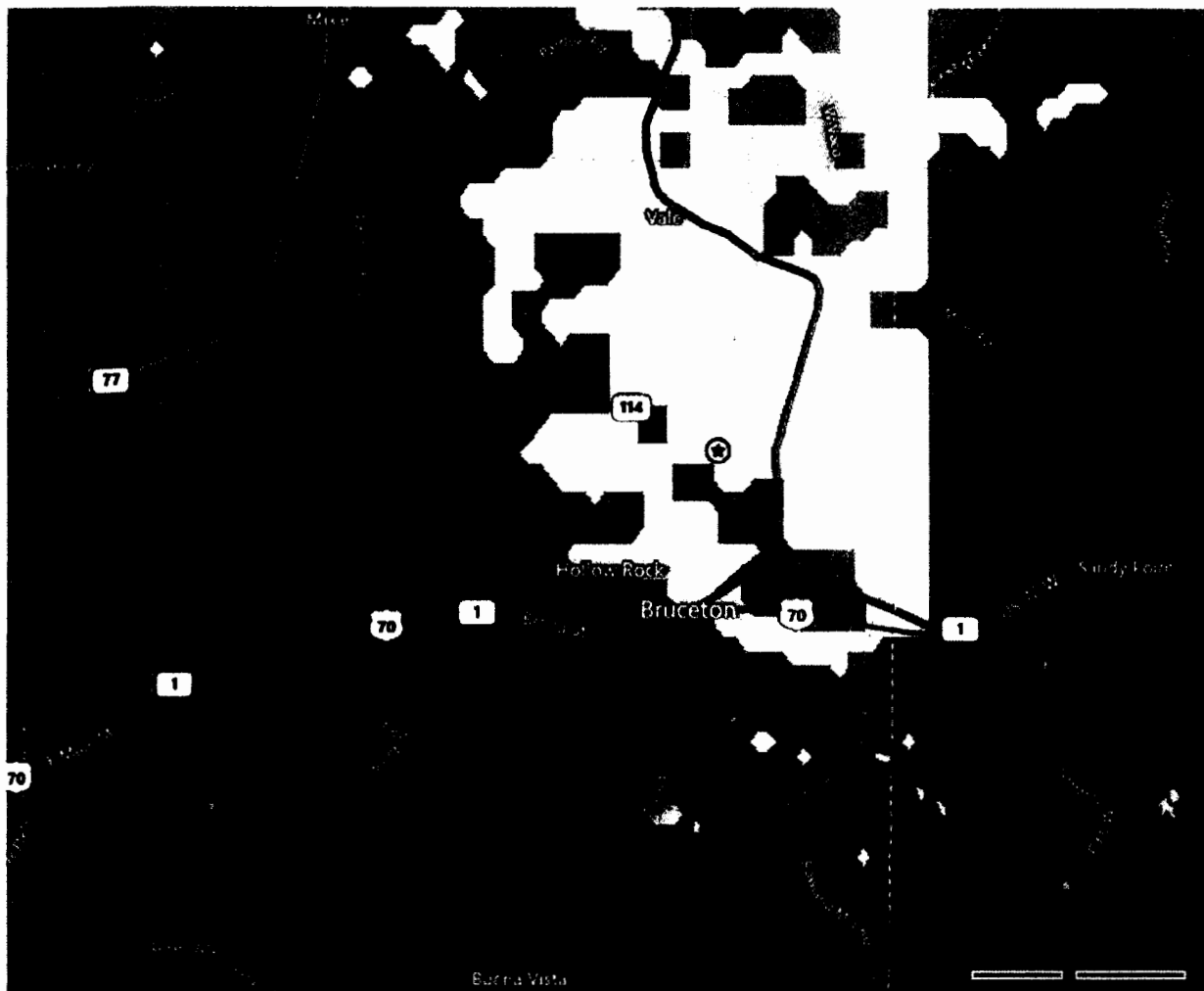

[Print](#)

Map of 38317

Bruceton
[< Back to search results](#)

Domestic Wireless Voice Coverage

This map shows wireless voice coverage in the United States, Puerto Rico and the U.S. Virgin Islands.



Legend Your search Best Good Moderate Partner

Requires 3G Handset

Important Information About This Coverage Map

This coverage viewer provides a high-level approximation of wireless coverage. There are gaps in coverage that are not shown by this high-level approximation. Actual coverage may differ from map graphics and may be affected by terrain, weather, foliage, buildings and other construction, signal strength, high-usage periods, customer equipment, and other factors. AT&T does not guarantee coverage. Our coverage maps are not intended to show actual customer performance on the network, nor are they intended to show future network needs or build requirements inside or outside of existing AT&T coverage areas. Coverage maps also may include areas served by unaffiliated carriers and may depict licensed areas rather than an approximation of coverage. Charges will be based on the location of the site receiving and transmitting

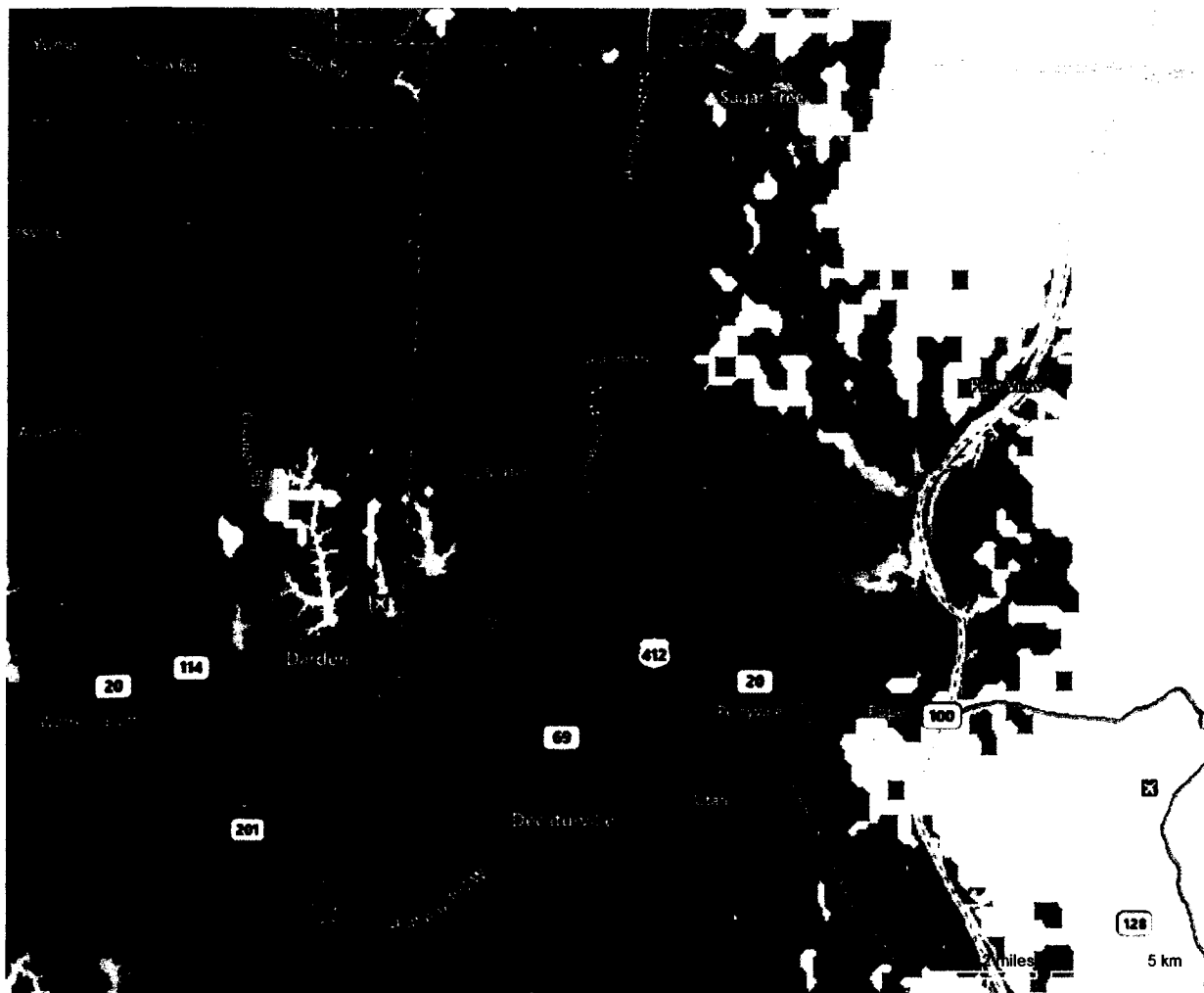
[Print](#)

Map of 38363

PARSONS
[← Back to search results](#)

Domestic Wireless Voice Coverage

This map shows wireless voice coverage in the United States, Puerto Rico and the U.S. Virgin Islands.



Legend Your search Best Good Moderate Partner

Requires 3G Handset

Important Information About This Coverage Map

This coverage viewer provides a high-level approximation of wireless coverage. There are gaps in coverage that are not shown by this high-level approximation. Actual coverage may differ from map graphics and may be affected by terrain, weather, foliage, buildings and other construction, signal strength, high-usage periods, customer equipment, and other factors. AT&T does not guarantee coverage. Our coverage maps are not intended to show actual customer performance on the network, nor are they intended to show future network needs or build requirements inside or outside of existing AT&T coverage areas. Coverage maps also may include areas served by unaffiliated carriers and may depict licensed areas rather than an approximation of coverage. Charges will be based on the location of the site receiving and transmitting


[Print](#)

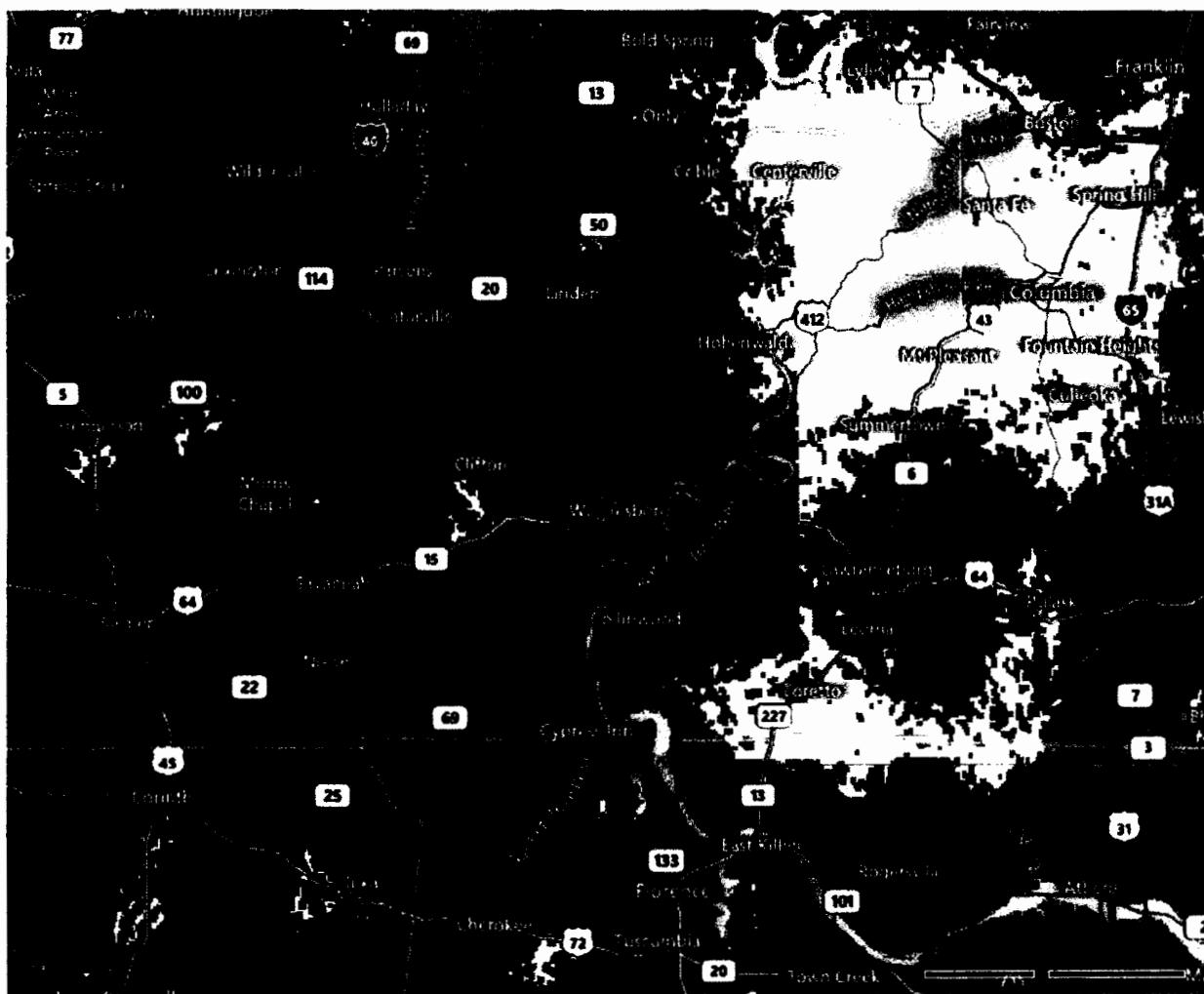
Waynesboro

Map of 38485

[< Back to search results](#)

Domestic Wireless Voice Coverage

This map shows wireless voice coverage in the United States, Puerto Rico and the U.S. Virgin Islands.



Legend



Your search

Best

Good

Moderate

Partner

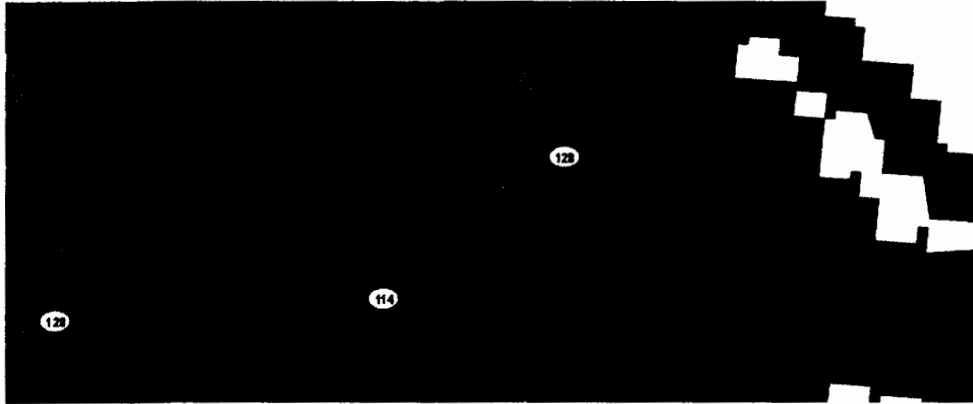
Requires 3G Handset

Important Information About This Coverage Map

This coverage viewer provides a high-level approximation of wireless coverage. There are gaps in coverage that are not shown by this high-level approximation. Actual coverage may differ from map graphics and may be affected by terrain, weather, foliage, buildings and other construction, signal strength, high-usage periods, customer equipment, and other factors. AT&T does not guarantee coverage. Our coverage maps are not intended to show actual customer performance on the network, nor are they intended to show future network needs or build requirements inside or outside of existing AT&T coverage areas. Coverage maps also may include areas served by unaffiliated carriers and may depict licensed areas rather than an approximation of coverage. Charges will be based on the location of the site receiving and transmitting

**Verizon Wireless Printer Friendly Coverage Map**

CLIFTON

Mapped Coverage
Voice and MessagingMapped Location
38425**Map Legend**

Digital Coverage

Extended Digital Coverage

No Coverage

VZW Store

These Coverage Locator depictions apply to the following calling plans:

Share Everything, Nationwide Calling Plans, Mobile Broadband and Prepaid.

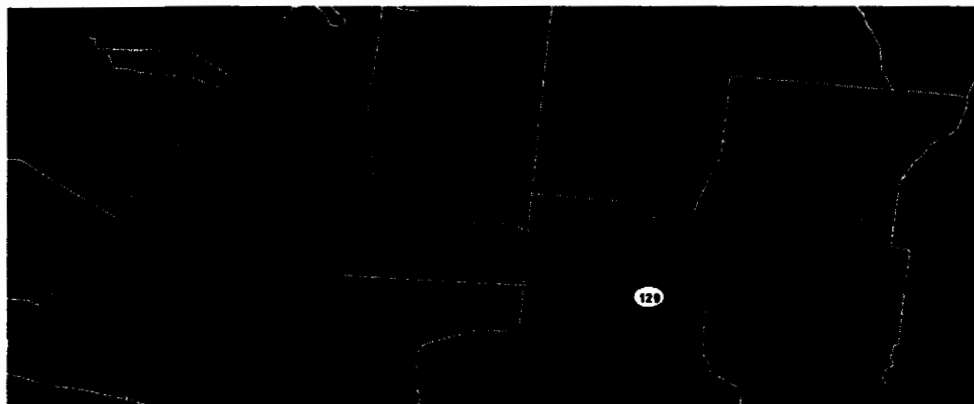
Voice roaming charges will apply in the Canada and Mexico coverage areas unless you subscribe to the Share Everything or Nationwide Plus Canada/Mexico Plan.

These Coverage Locator maps depict predicted and approximate wireless coverage. The coverage areas shown do not guarantee service availability, and may include locations with limited or no coverage. Even within a coverage area, there are many factors, including customer's equipment, terrain, proximity to buildings, foliage, and weather that may impact service. Some of the Coverage Areas include networks run by other carriers, the coverage depicted is based on their information and public sources, and we cannot ensure its accuracy.

CORNERSVILLE



Verizon Wireless Printer Friendly Coverage Map

Mapped Coverage
Voice and MessagingMapped Location
37047

Map Legend

Digital Coverage

Extended Digital Coverage

No Coverage

VZW Store

These Coverage Locator depictions apply to the following calling plans:

Share Everything, Nationwide Calling Plans, Mobile Broadband and Prepaid.

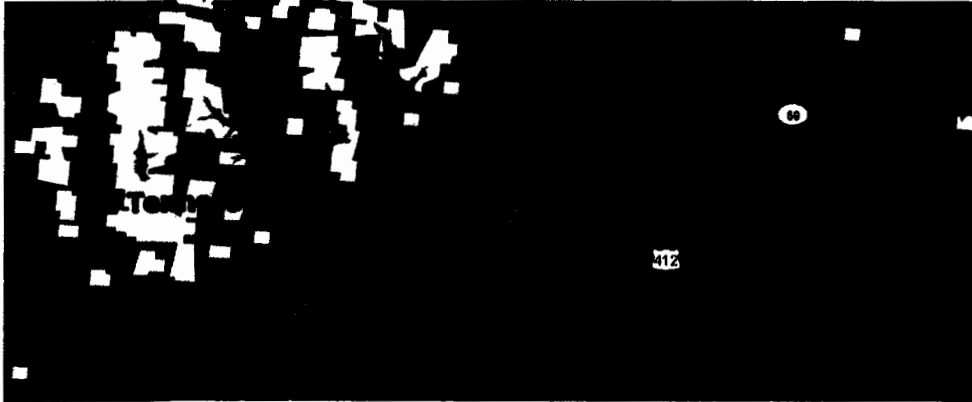
Voice roaming charges will apply in the Canada and Mexico coverage areas unless you subscribe to the Share Everything or Nationwide Plus Canada/Mexico Plan.

These Coverage Locator maps depict predicted and approximate wireless coverage. The coverage areas shown do not guarantee service availability, and may include locations with limited or no coverage. Even within a coverage area, there are many factors, including customer's equipment, terrain, proximity to buildings, foliage, and weather that may impact service. Some of the Coverage Areas include networks run by other carriers, the coverage depicted is based on their information and public sources, and we cannot ensure its accuracy.

DARDEN



Verizon Wireless Printer Friendly Coverage Map

Mapped Coverage
Voice and MessagingMapped Location
38328

Map Legend

Digital Coverage

Extended Digital Coverage

No Coverage

VZW Store

These Coverage Locator depictions apply to the following calling plans:

Share Everything, Nationwide Calling Plans, Mobile Broadband and Prepaid.

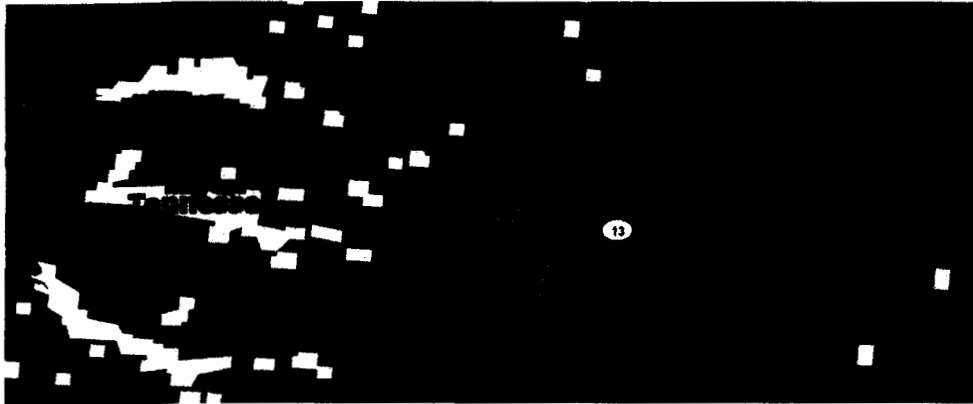
Voice roaming charges will apply in the Canada and Mexico coverage areas unless you subscribe to the Share Everything or Nationwide Plus Canada/Mexico Plan.

These Coverage Locator maps depict predicted and approximate wireless coverage. The coverage areas shown do not guarantee service availability, and may include locations with limited or no coverage. Even within a coverage area, there are many factors, including customer's equipment, terrain, proximity to buildings, foliage, and weather that may impact service. Some of the Coverage Areas include networks run by other carriers, the coverage depicted is based on their information and public sources, and we cannot ensure its accuracy.

**Verizon Wireless Printer Friendly Coverage Map**

Mapped Coverage
Voice and Messaging

Mapped Location
37097

Lobelville**Map Legend**

Digital Coverage

Extended Digital Coverage

No Coverage

VZW Store

These Coverage Locator depictions apply to the following calling plans:

Share Everything, Nationwide Calling Plans, Mobile Broadband and Prepaid.

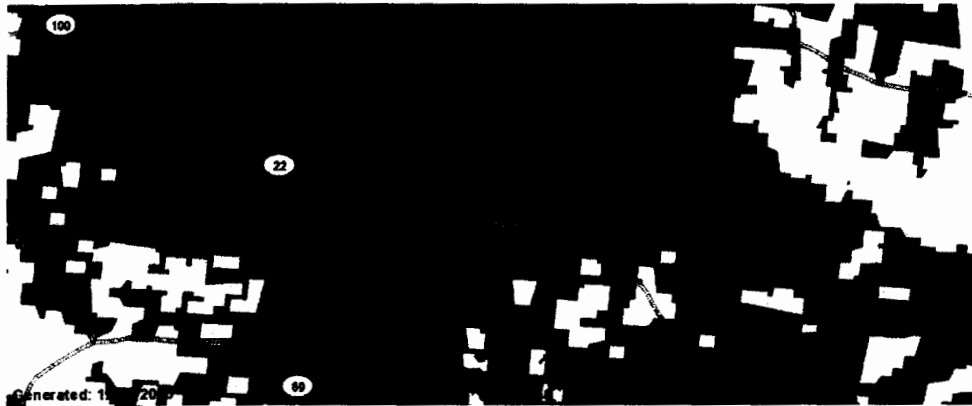
Voice roaming charges will apply in the Canada and Mexico coverage areas unless you subscribe to the Share Everything or Nationwide Plus Canada/Mexico Plan.

These Coverage Locator maps depict predicted and approximate wireless coverage. The coverage areas shown do not guarantee service availability, and may include locations with limited or no coverage. Even within a coverage area, there are many factors, including customer's equipment, terrain, proximity to buildings, foliage, and weather that may impact service. Some of the Coverage Areas include networks run by other carriers, the coverage depicted is based on their information and public sources, and we cannot ensure its accuracy.



Verizon Wireless Printer Friendly Coverage Map

SARDIS

Mapped Coverage
Voice and MessagingMapped Location
38371

Map Legend

Digital Coverage

Extended Digital Coverage

No Coverage

VZW Store

These Coverage Locator depictions apply to the following calling plans:

Share Everything, Nationwide Calling Plans, Mobile Broadband and Prepaid.

Voice roaming charges will apply in the Canada and Mexico coverage areas unless you subscribe to the Share Everything or Nationwide Plus Canada/Mexico Plan.

These Coverage Locator maps depict predicted and approximate wireless coverage. The coverage areas shown do not guarantee service availability, and may include locations with limited or no coverage. Even within a coverage area, there are many factors, including customer's equipment, terrain, proximity to buildings, foliage, and weather that may impact service. Some of the Coverage Areas include networks run by other carriers, the coverage depicted is based on their information and public sources, and we cannot ensure its accuracy.

**Verizon Wireless Printer Friendly Coverage Map**

Mapped Coverage
Voice and Messaging

Mapped Location
38450

Collinwood

**Map Legend**

Digital Coverage

Extended Digital Coverage

No Coverage

VZW Store

These Coverage Locator depictions apply to the following calling plans:

Share Everything, Nationwide Calling Plans, Mobile Broadband and Prepaid.

Voice roaming charges will apply in the Canada and Mexico coverage areas unless you subscribe to the Share Everything or Nationwide Plus Canada/Mexico Plan.

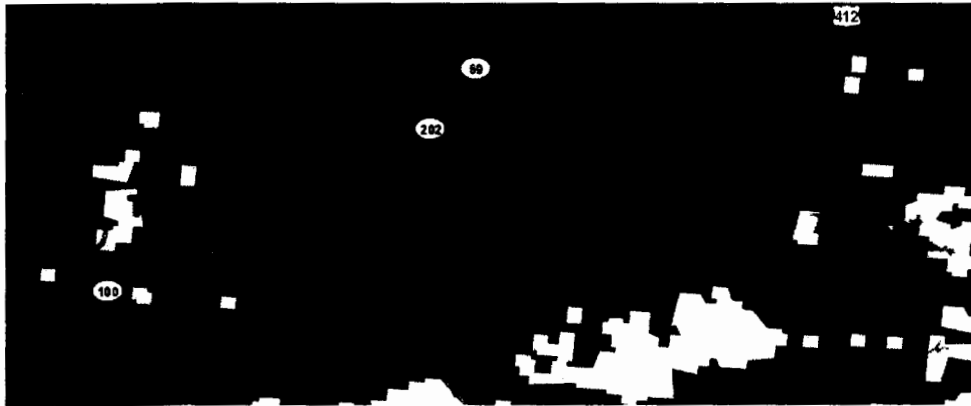
These Coverage Locator maps depict predicted and approximate wireless coverage. The coverage areas shown do not guarantee service availability, and may include locations with limited or no coverage. Even within a coverage area, there are many factors, including customer's equipment, terrain, proximity to buildings, foliage, and weather that may impact service. Some of the Coverage Areas include networks run by other carriers, the coverage depicted is based on their information and public sources, and we cannot ensure its accuracy.



Verizon Wireless Printer Friendly Coverage Map

Mapped Coverage
Voice and MessagingMapped Location
38329

DECATURVILLE



Map Legend

Digital Coverage

Extended Digital Coverage

No Coverage

VZW Store

These Coverage Locator depictions apply to the following calling plans:

Share Everything, Nationwide Calling Plans, Mobile Broadband and Prepaid.

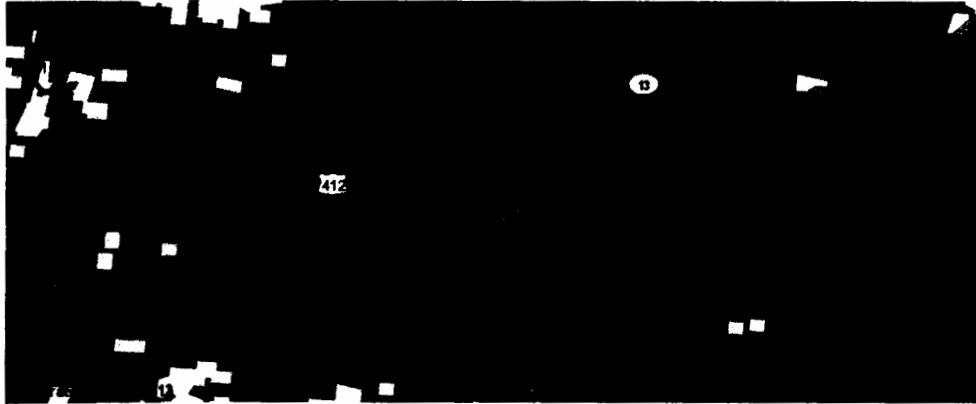
Voice roaming charges will apply in the Canada and Mexico coverage areas unless you subscribe to the Share Everything or Nationwide Plus

Canada/Mexico Plan.

These Coverage Locator maps depict predicted and approximate wireless coverage. The coverage areas shown do not guarantee service availability, and may include locations with limited or no coverage. Even within a coverage area, there are many factors, including customer's equipment, terrain, proximity to buildings, foliage, and weather that may impact service. Some of the Coverage Areas include networks run by other carriers, the coverage depicted is based on their information and public sources, and we cannot ensure its accuracy.

**Verizon Wireless Printer Friendly Coverage Map**Mapped Coverage
Voice and MessagingMapped Location
37096

LINDEN

**Map Legend**

Digital Coverage

Extended Digital Coverage

No Coverage

Verizon Store

These Coverage Locator depictions apply to the following calling plans:

Share Everything, Nationwide Calling Plans, Mobile Broadband and Prepaid.

Voice roaming charges will apply in the Canada and Mexico coverage areas unless you subscribe to the Share Everything or Nationwide Plus Canada/Mexico Plan.

These Coverage Locator maps depict predicted and approximate wireless coverage. The coverage areas shown do not guarantee service availability, and may include locations with limited or no coverage. Even within a coverage area, there are many factors, including customer's equipment, terrain, proximity to buildings, foliage, and weather that may impact service. Some of the Coverage Areas include networks run by other carriers, the coverage depicted is based on their information and public sources, and we cannot ensure its accuracy.

**Verizon Wireless Printer Friendly Coverage Map**Mapped Coverage
Voice and MessagingMapped Location
38374*Scotts Hill***Map Legend**

Digital Coverage

Extended Digital Coverage

No Coverage

VZW Store

These Coverage Locator depictions apply to the following calling plans:**Share Everything, Nationwide Calling Plans, Mobile Broadband and Prepaid.**

Voice roaming charges will apply in the Canada and Mexico coverage areas unless you subscribe to the Share Everything or Nationwide Plus Canada/Mexico Plan.

These Coverage Locator maps depict predicted and approximate wireless coverage. The coverage areas shown do not guarantee service availability, and may include locations with limited or no coverage. Even within a coverage area, there are many factors, including customer's equipment, terrain, proximity to buildings, foliage, and weather that may impact service. Some of the Coverage Areas include networks run by other carriers, the coverage depicted is based on their information and public sources, and we cannot ensure its accuracy.

Coverage Locator

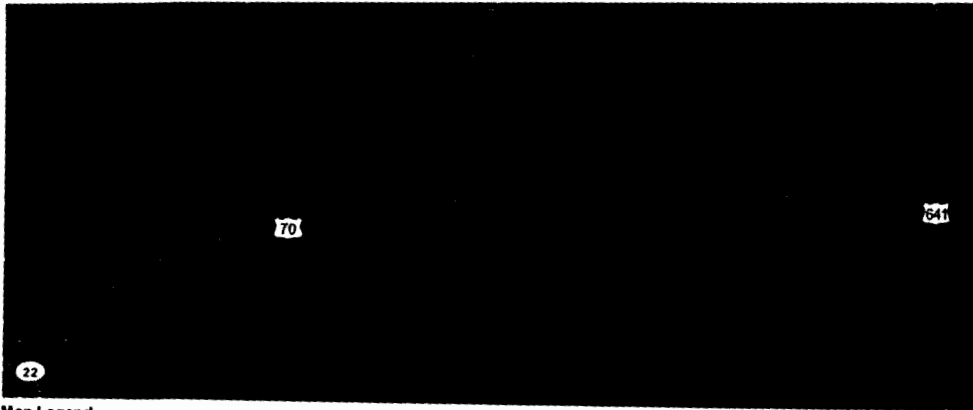


Verizon Wireless Printer Friendly Coverage Map

Mapped Coverage
Voice and Messaging

Mapped Location
38317

Bruceston



Map Legend

Digital Coverage

Extended Digital Coverage

No Coverage

VZW Store

These Coverage Locator depictions apply to the following calling plans:
Share Everything, Nationwide Calling Plans, Mobile Broadband and Prepaid.
Voice roaming charges will apply in the Canada and Mexico coverage areas unless you subscribe to the Share Everything or Nationwide Plus Canada/Mexico Plan.
These Coverage Locator maps depict predicted and approximate wireless coverage. The coverage areas shown do not guarantee service availability, and may include locations with limited or no coverage. Even within a coverage area, there are many factors, including customer's equipment, terrain, proximity to buildings, foliage, and weather that may impact service. Some of the Coverage Areas include networks run by other carriers, the coverage depicted is based on their information and public sources, and we cannot ensure its accuracy.

Coverage Locator

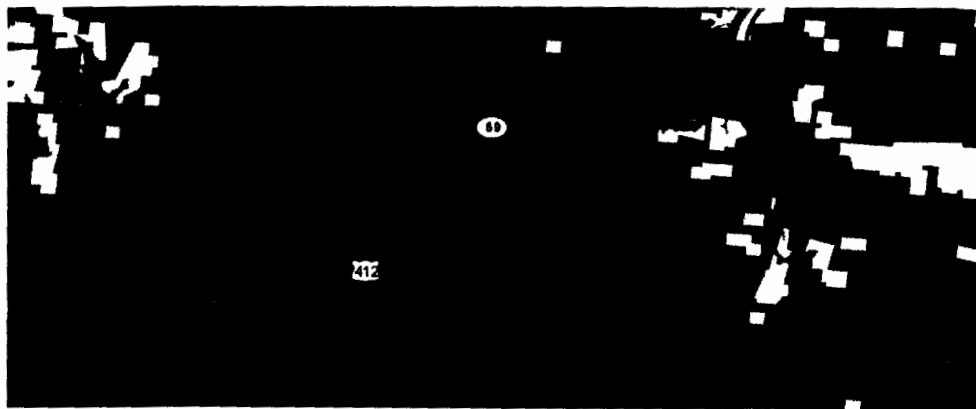


Verizon Wireless Printer Friendly Coverage Map

Mapped Coverage
Voice and Messaging

Mapped Location
38363

Parsons



Map Legend

Digital Coverage

Extended Digital Coverage

No Coverage

VZW Store

These Coverage Locator depictions apply to the following calling plans:

Share Everything, Nationwide Calling Plans, Mobile Broadband and Prepaid.

Voice roaming charges will apply in the Canada and Mexico coverage areas unless you subscribe to the Share Everything or Nationwide Plus Canada/Mexico Plan.

These Coverage Locator maps depict predicted and approximate wireless coverage. The coverage areas shown do not guarantee service availability, and may include locations with limited or no coverage. Even within a coverage area, there are many factors, including customer's equipment, terrain, proximity to buildings, foliage, and weather that may impact service. Some of the Coverage Areas include networks run by other carriers, the coverage depicted is based on their information and public sources, and we cannot ensure its accuracy.



Mapped Location
38485

WAYNESboro



• Coverage

 JazzW Store

Extended Digital Coverage

Digital Coverage

Following calling plans:
1. Broadband and Prepaid.
 2. coverage areas unless you subscribe to the Share Everything or Nationwide Plus
 3. approximate wireless coverage. The coverage areas shown do not guarantee service availability,
 4. even within a coverage area, there are many factors, including customer's equipment, terrain,
 5. local service. Some of the Coverage Areas include networks run by other carriers, the coverage
 6. areas, and we cannot ensure its accuracy.

**These Coverage Locator depictions
Share Everything. Nationwide Car
Voice roaming charges will apply in all
Canada/Mexico Plan.
These Coverage Locator maps
and may include locations with
proximity to buildings, foliage
depicted is based on their**