

DSH & Associates, LLC
Engineering/Construction/Utility Services

December 20, 2011

filed electronically in docket office on 12/20/11

Sharla Dillon
Dockets and Records Manager
Tennessee Regulatory Authority
460 James Robertson Parkway
Nashville, TN 37243-0505
Sharla.Dillon@tn.gov
615-741-2904 ext 136

SUBJECT: CUSTOMER NOFICATIONS

Docket Number 11-00162

Dear Ms. Dillon,

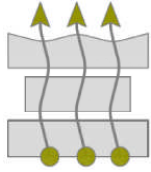
Please find attached:

- Customer notification of proposed rate changes.
- Public Notification that was Published in the LaFollette Press.

Let me know if you require additional information.

Sincerely,

Douglas S. Hodge, Ph.D., PMP
Manager
DSH & Associates, LLC
4028 Taliluna Avenue
Knoxville, TN 37919
Operations Manager
P: 865-755-8066/F: 866-480-5943
Hodge.DSH@gmail.com



DSH & Associates, LLC

Engineers and Consultants

December 8, 2011

**SUBJECT: SEWER UTILITY SERVICES
LAKESIDE ESTATES**

Dear DSH Utility Services Customers:

On July 30, 2011, DSH notified you of rate changes that were in the review process with Tennessee Regulatory Authority (TRA). Attached you will find more details of the purposed rate changes and notification of a TRA hearing to review these rates on January 9, 2012.

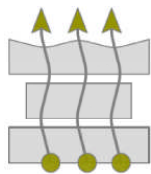
As discussed with you in our meeting in Ohio, these rate changes are required to pay for all the services required to operate the decentralized treatment facility and to ensure sufficient funds for future expansions.

If you have any questions, please feel free to contact me at 865-755-8066.

Hope you and your family have a Happy Holiday Season!

Sincerely,

Douglas S. Hodge, Ph.D., PMP
Manager
DSH & Associates, LLC



DSH & Associates, LLC

Engineers and Consultants

PUBLIC NOTICE
SEWER UTILITY PROPOSED RATE CHANGE
LAKESIDE ESTATES SUBDIVISION, CAMPBELL COUNTY, TN

On July 11, 2011, the Tennessee Regulatory Authority ("TRA") approved a Certificate of Convenience and Necessity for DSH & Associates, LLC (DSH) to operate a wastewater service for Lakeside Estates Subdivision. On September 9, 2011, DSH filed a Petition with the TRA to increase your wastewater rates, as the current rates do not provide sufficient revenues to adequately operate the system. The proposed rate changes are as follows: Our new proposed monthly rate for residential customers will decrease from \$54.48 to \$44.53. This represents a \$9.95 monthly reduction in the rate. If you rent your home during any period of time, your rate will increase from \$54.48 to a rate based on usage with a minimum rate of \$69.53 per month. The table below outlines DSH's proposed schedule of rates, based on usage:

COMMERCIAL W/O FOOD	FLOWRATE		TOTAL**	ESCROW***
	BETWEEN (GPD)			
Tier 1	0	300	\$ 69.53	\$ 15.95
Tier 2.1	301	400	\$ 84.53	\$ 19.49
Tier 2.2	401	500	\$ 99.53	\$ 23.02
Tier 2.3	501	600	\$ 114.53	\$ 26.56
Tier 2.4	601	700	\$ 129.53	\$ 30.10
Tier 2.5	701	800	\$ 144.53	\$ 33.63
Tier 2.6	801	900	\$ 159.53	\$ 37.17
Tier 2.7	901	1000	\$ 174.53	\$ 40.71
Tier 3.1	1001	2000	\$ 332.48	\$ 77.95
Tier 3.2	2001	3000	\$ 490.43	\$ 115.19
Tier 3.3	3001	4000	\$ 648.38	\$ 152.43
Each additional tier			\$ 157.95	\$ 37.24

The disconnection/reconnection charge of \$75 will be changed to split charges with a disconnection fee of \$40 and reconnection fee of \$50. The owner of each property parcel, which is provided a service connection when the sewer system is built, will be required to pay a sewer access fee of \$120.00 per year. This fee will be payable each July 1st. As each Customer attaches to the Service Connection and signs up for service, they will pay a pro-rated access fee for that year and thereafter the fee will not be charged. Tap fees will be charged for a new home that connects to the sewer system as outlined in the following table:

Daily Flowrate (gpd)	Number of Bedrooms	Estimate Tap Fee
300	3	\$3,750.00
400	4	\$5,000.00
500	5	\$6,250.00
600	6	\$7,500.00
700	7	\$8,750.00
800	8	\$10,000.00
900	9	\$11,250.00
1000	10	\$12,500.00

A complete copy of our Petition is on file with the TRA, Docket No. 11-00162. Non-confidential information related to the rate filing may be viewed online at <http://www.state.tn.us/tra/dockets/1100162.htm>. Prior to these new rates going into effect, a hearing will be conducted before the TRA Directors on Monday, January 9, 2012 during the Authority Conference scheduled to begin at 1:00 p.m. CST in the Hearing Room on the ground floor at 460 James Robertson Parkway, Nashville, TN. The TRA will conduct the Hearing in accordance with Tenn. Code Ann. § 4-5-301, *et seq.*, and may deliberate the merits of the above-captioned proceeding. So that reasonable accommodations may be made, participants with disabilities who require special accommodations or alternate communications formats should contact the Tennessee Regulatory Authority ADA-EEO/AA Coordinator/Officer at 460 James Robertson Parkway, Nashville, Tennessee 37243-0505, 1-800-342-8359 or TDD (615) 741-3930.

PUBLIC NOTICE
SEWER UTILITY PROPOSED RATE CHANGE
LAKE SIDE ESTATES SUBDIVISION, CAMPBELL COUNTY, TN

On July 11, 2011, the Tennessee Regulatory Authority ("TRA") approved a Certificate of Convenience and Necessity for DSH & Associates, LLC (DSH) to operate a wastewater service for Lakeside Estates Subdivision. On September 9, 2011, DSH filed a Petition with the TRA to increase your wastewater rates, as the current rates do not provide sufficient revenues to adequately operate the system. The proposed rate changes are as follows: Our new proposed monthly rate for residential customers will decrease from \$54.48 to \$44.53. This represents a \$9.95 monthly reduction in the rate. If you rent your home during any period of time, your rate will increase from \$54.48 to a rate based on usage with a minimum rate of \$69.53 per month. The table below outlines DSH's proposed schedule of rates, based on usage:

<u>COMMERCIAL W/O FOOD</u>	<u>FLOWRATE</u>		<u>TOTAL**</u>	<u>ESCROW***</u>
	<u>BETWEEN (GPD)</u>			
Tier 1	0	300	\$ 69.53	\$ 15.95
Tier 2.1	301	400	\$ 84.53	\$ 19.49
Tier 2.2	401	500	\$ 99.53	\$ 23.02
Tier 2.3	501	600	\$ 114.53	\$ 26.56
Tier 2.4	601	700	\$ 129.53	\$ 30.10
Tier 2.5	701	800	\$ 144.53	\$ 33.63
Tier 2.6	801	900	\$ 159.53	\$ 37.17
Tier 2.7	901	1000	\$ 174.53	\$ 40.71
Tier 3.1	1001	2000	\$ 332.48	\$ 77.95
Tier 3.2	2001	3000	\$ 490.43	\$ 115.19
Tier 3.3	3001	4000	\$ 648.38	\$ 152.43
Each additional tier			\$ 157.95	\$ 37.24

The disconnection/reconnection charge of \$75 will be changed to split charges with a disconnection fee of \$40 and reconnection fee of \$50. The owner of each property parcel, which is provided a service connection when the sewer system is built, will be required to pay a sewer access fee of \$120.00 per year. This fee will be payable each July 1st. As each Customer attaches to the Service Connection and signs up for service, they will pay a pro-rated access fee for that year and thereafter the fee will not be charged. Tap fees will be charged for a new home that connects to the sewer system as outlined in the following table:

Daily Flowrate (gpd)	Number of Bedrooms	Estimate Tap Fee
300	3	\$3,750.00
400	4	\$5,000.00
500	5	\$6,250.00
600	6	\$7,500.00
700	7	\$8,750.00
800	8	\$10,000.00
900	9	\$11,250.00
1000	10	\$12,500.00

A complete copy of our Petition is on file with the TRA, Docket No. 11-00162. Non-confidential information related to the rate filing may be viewed online at <http://www.state.tn.us/tra/dockets/1100162.htm>. Prior to these new rates going into effect, a hearing will be conducted before the TRA Directors on Monday, January 9, 2012 during the Authority Conference scheduled to begin at 1:00 p.m. CST in the Hearing Room on the ground floor at 460 James Robertson Parkway, Nashville, TN. The TRA will conduct the Hearing in accordance with Tenn. Code Ann. § 4-5-301, *et seq.*, and may deliberate the merits of the above-captioned proceeding. So that reasonable accommodations may be made, participants with disabilities who require special accommodations or alternate communications formats should contact the Tennessee Regulatory Authority ADA-EEO/AA Coordinator/Officer at 460 James Robertson Parkway, Nashville, Tennessee 37243-0505, 1-800-342-8359 or TDD (615) 741-3930.