

Docket No. 11-00028

filed electronically in docket office on 02/11/11

**Cartwright Creek, L.L.C.**  
**PO Box 147**  
**1551 Thompson's Station Road West**  
**Thompson's Station, TN 37179**  
**615-261-8600**

February 11, 2011

Mr. David Foster, Chief  
Utilities Division  
Tennessee Regulatory Authority  
460 James Robertson Parkway  
Nashville, TN 37243-0505

Subject: Cartwright Creek, LLC - Request for Approval of Use of Escrowed Tap Fee  
Docket No.: To Be Assigned

Dear Mr. Foster,

In the "Order Approving Settlement Agreement and Determining Contested Issues" of March 2, 2010 (Docket No. 09-00056), the Commission specified that future tap fee revenues be set aside in an escrow account and that Cartwright Creek file a request for preapproval before funds can be expended from the account. The current real estate market downturn has limited the expected interest in new taps. Accordingly, Cartwright Creek has received only one tap fee (for \$4,698 from a non-residential customer), which was deposited into a separate account at Pinnacle Bank.

The purpose of this letter is to request use of escrowed funds to upgrade Cartwright Creek's laboratory.

An audit of Cartwright Creek's on-site laboratory by the Tennessee Department of Environment and Conservation resulted a number of upgrade requirements. One such request was for the Company to purchase an autoclave for sterilizing laboratory glassware and equipment used in required bacteriological testing. Historically, the laboratory has used a pressure cooker sterilizer, which is unacceptable to TDEC due to safety concerns. A new, manually-controlled, autoclave of the proper size is approximately \$5,500 (attached). A comparably sized refurbished unit is \$2,700 (attached).

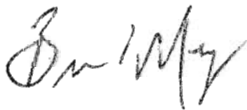
Recently, the USEPA approved an alternative procedure (Idexx Quanti-Tray) ([http://www.idexx.com/view/xhtml/en\\_us/water/quant-tray.jsf](http://www.idexx.com/view/xhtml/en_us/water/quant-tray.jsf)) for certain bacteriologic tests, including the test required for Cartwright Creek's discharge permit. The procedure does not require use of extensive glassware and eliminates the need for sterilization. Added benefits from this procedure include more accuracy, less setup time, and free-up

of counter space. Initial setup for the procedure requires a one-time purchase of a machine to properly seal the sample holders prior to incubation. A quotation for the machine and initial setup is attached.

Cartwright Creek is requesting TRA approve use of \$4,177 escrowed funds (\$3,832 equipment plus 9% tax) to purchase the equipment (sealer, fluorescent lamp, viewing cabinet) on the attached quotation. Other items on the quotation are related testing supplies and will be funded by Cartwright Creek's operating budget.

Please contact me if you have any questions.

Sincerely,

A handwritten signature in black ink, appearing to read "Bruce E. Meyer". The signature is fluid and cursive, with the first name "Bruce" and last name "Meyer" clearly distinguishable.

Bruce E. Meyer  
Vice President – Operations  
Cartwright Creek, LLC

- Filed Electronically w Docket office 2/11/11
- Original and five copies FedEx to Docket office

516-280-7822



Accessories

Alfa's Profile

Contact Us

Home

Parts

Support

Site Map

Testimonials

Trouble Shooting

Ultrasonic Cleaner

Used Sterilizers

What shall I get?

Disclaimer

Create Account



Login

**Item Number:** Z-VAL10-PLUS-R**Description:** Pelton Crane Validator 10 Plus Sterilizer Reconditioned

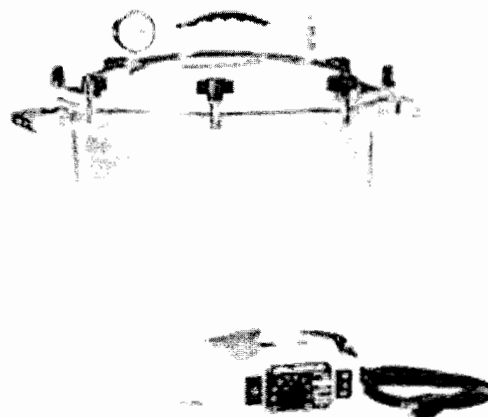
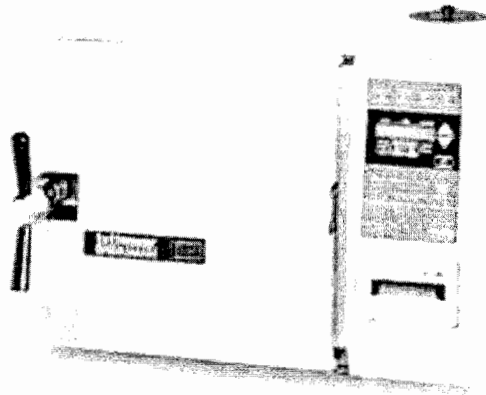
This 10" dia x 18" deep sterilizer is the sterilizer to get when budget is low. It comes with 90 days warranty for parts and labor. Automatic shut off and venting mechanism will insure proper shut down at the end of the cycle.

At the heart of the validator is a microchip memory that is programmed for easy use. Four program provide the proper temperature and pressure to sterilize most instruments and materials used in your practice.

Using the validator is simple. With the power on, all you have to do is load the chamber, choose the proper program and push one button. The Validator does the rest filling, heating, sterilizing, venting, and drying-freeing the operator for other tasks. Power Requirement 120 or 220-240 volts 50-60Hz (120volts).

**Your Price:** \$2,797.00Quantity needed: **Specifications:**

- Chamber Size: 9" Diameter
- 17" Deep
- Rebuild Machine
- Automatic (electronic) controlled
- Steam Sterilizer
- Power Supply: 110V
- 12 minutes cycle
- Table Style
- Weight: 106.00 Pounds.



## Tuttnauer Tabletop Autoclaves

- Automatic shutoff at the end of sterilization and dry cycles
- Dual safety thermostat protects against overheating
- Double safety locking device prevents door from opening while chamber is pressurized

Tuttnauer tabletop autoclaves allow safe, timely sterilization of equipment, materials and liquids—all without the hassle of external plumbing or hardwiring. Set your desired temperature and pressure as well as your exhaust speed. Fast exhaust allows quick cycle times for solids, and slow exhaust prevents media and liquid boil-over. The user-refillable water reservoir even lets you control the quality of the water you use.

Units have a 60-minute cycle timer with automatic shut-off, and allow a drying cycle after sterilization to remove residual moisture. Additional features include a double safety locking device that keeps the door shut when pressurized, a pressure and temperature gauge with peak indicator, an over-pressure gauge, and a dual safety thermostat to protect against overheating. Over-temperature cut-off prevents damage if the water level runs low. The autoclave's 316L stainless steel chamber include four SS trays.

### Choose from manual or digital autoclaves

**Manual autoclaves** are economical and mechanically operated. They feature simple analog gauges and controls that allow you to easily set the time and temperature.

**Digital autoclaves** are more advanced—they are microprocessor-controlled and show operating parameters on a digital display. Four fully programmable, one-button programs provide easy and reproducible results. You can set and store temperature settings, temperature units, pressure settings, pressure units and drying times.

Digital models are available with an optional built-in printer for GLP documentation. Printer provides summary of cycle number, cycle time, temperature, pressure, real time and date, as well as any errors or interruptions that occurred.



<b>Overall dimensions:</b>	20"L x 15"W x 20"H
<b>Chamber dimensions:</b>	10"Dia x 18"H
<b>Tray size:</b>	16.3"L x 0.8"W x 6.7"H
<b>Reservoir capacity:</b>	3.25 liters
<b>Temperature range</b>	
Manual models:	100 to 134°C (212 to 273°F)
Digital models:	105 to 137°C (221 to 279°F)
<b>Maximum rated pressure:</b>	40 psi
<b>Shipping weight:</b>	106 lbs

MFR #	DESCRIPTION	STOCK #	EACH
2540M	Manual Autoclave	ME-35472	\$ 5,695.00
2540E	Digital Autoclave	ME-35473	6,795.00
2540EP	Digital Autoclave with Built-In Printer	ME-35474	7,295.00

## Portable Electric Steam Sterilizers

- Economical sterilization method

Self-contained sterilizer features an automatic thermostat control, an automatic release valve and pilot light to indicate when the unit is in use. Simply remove the inner chamber, add distilled water to the proper level, reinsert the inner chamber, secure the lid, and turn the unit on.

It takes approximately 35 minutes before steam begins escaping from the control valve. Heat control is calibrated at the factory but can be adjusted on site. Sterilization begins when pressure reaches 17 to 19 psi.

Order the optional sterilizer stand to elevate the sterilizer 1-3/8" above your table surface. The base is designed to permit free circulation of air while protecting your countertop. Sterilizer includes a 6-ft 3-wire grounded cord with plug and operates on 115 VAC. UL listed.

<b>Overall dimensions:</b>	12 1/2"Dia x 17"H
<b>Chamber dimensions:</b>	11 1/8"Dia x 8 1/2"H (825 cubic inches)
<b>Reservoir capacity:</b>	2.4 liters
<b>Maximum temperature:</b>	126°C (259°F)
<b>Maximum rated pressure:</b>	19 psi
<b>Shipping weight:</b>	30 lbs

DESCRIPTION	STOCK #	EACH
Steam Sterilizer	ME-30330	\$ 765.00
Optional Stand	ME-30331	69.95



## 300-mL BOD Bottles

- Recommended for the 5-day BOD test

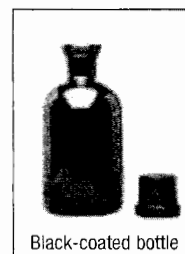
Choose from Clear or Black PVC-coated bottles. There's no need to tape black bottles since they block out all visible light up to 800 nm, preventing errors due to photosynthetic DO production by the sample. Both bottles feature flared mouth, sloped shoulders and large marking spot.

Clear bottles are available numbered and bar coded for quick identification and recording. Numbered bottles are available by the case only.

**Includes:** glass stopper. Black bottles also include black cap.



DESCRIPTION	STOCK #	EACH
Clear BOD Bottle, 300 mL, Unnumbered	AE-34970	\$ 11.50
Black BOD Bottle, 300 mL, Unnumbered	AE-34997	18.50
DESCRIPTION	STOCK #	CASE/24
Unnumbered Case, Clear	AE-34969	\$ 225.00
1 to 24 Numbered Case, Clear	AE-34971	264.00
25 to 48 Numbered Case, Clear	AE-34972	264.00
49 to 72 Numbered Case, Clear	AE-34973	264.00
73 to 96 Numbered Case, Clear	AE-34974	264.00
97 to 120 Numbered Case, Clear	AE-34975	264.00
121 to 144 Numbered Case, Clear	AE-34976	264.00
Replacement Stoppers, 12/pk	AE-34968	44.49



Black-coated bottle



## QUOTE

Number / Date  
20080219 / November/02/2010

Ship to Address  
CARTWRIGHT CREEK LLC  
1000 TREATMENT PLANT RD  
FRANKLIN TN 37069  
UNITED STATES  
UNITED STATES

Sold to Address  
CARTWRIGHT CREEK LLC  
PO Box 147  
THOMPSONS STATION TN 37179  
UNITED STATES  
UNITED STATES

Terms of delivery : FPS,

Bill-to Customer 221229

Payment Terms : Within 30 days

Net weight : 32.670

\$500 off the Quanti-tray Sealer. Reagent is discounted from \$947 to \$805 (your locked price going forward unless your testing volume increases.)

Material ID Commodity/COO	Description Batch	Exp.Date	Quantity BO Item	UnitPrice	Total Value
99-10893-01	SEALER, WQTS2X-115V, 2X Q		1	3,500.00	3,500.00
9027509000/US					
98-12973-00	WP200I GAMMA IRRAD COLILE		1	805.00	805.00
3822000002/US					
98-09221-00	WV120SBST-200,VESSELS W/S		1	110.00	110.00
3926909910/US					
98-21675-00	WQT2K QUANTI-TRAY 2000 DI		2	150.00	300.00
3926909910/US					
98-20724-01	WL160,6 WATT FLOUR LAMP		1	137.00	137.00
8539490040/US					
98-21322-00	WCM10 UV VIEWING CABINET		1	195.00	195.00
8539900000/US					
98-09227-00	WQT2KC, PRE-DISP.QT 2000		1	20.00	20.00
3822000002/US					

Items total	5,067.00
Freight Value	114.94
Tax total	469.95
Total amount	USD 5,651.89
	=====

All local taxes at customer charge