

STATE OF TENNESSEE

Office of the Attorney General



ROBERT E. COOPER, JR.
ATTORNEY GENERAL AND REPORTER

MAILING ADDRESS

P.O. BOX 20207
NASHVILLE, TN 37202

MICHAEL E. MOORE
SOLICITOR GENERAL

CORDELL HULL BUILDING
NASHVILLE, TN 37243-0485

TELEPHONE (615) 741-3491
FACSIMILE (615) 741-2009

ANDY D. BENNETT
CHIEF DEPUTY ATTORNEY GENERAL

LUCY HONEY HAYNES
ASSOCIATE CHIEF DEPUTY
ATTORNEY GENERAL

April 11, 2007

Chairman Sara Kyle
c/o Sharla Dillon
Tennessee Regulatory Authority
460 Robertson Parkway
Nashville, Tennessee 37243-0505

filed electronically in docket office on 04/11/07

Re: *Tennessee American Water Company Rate Case*
TRA Docket No. 06-00290

Dear Chairman Kyle:

Enclosed please find Michael Chrysler's Supplemental Responses to No. 3 of the Company's discovery requests to the Consumer Advocate Division.

Very truly yours,

A handwritten signature in dark ink, appearing to read "Ryan L. McGehee".
Ryan L. McGehee
Assistant Attorney General
(615) 532-5512

cc: Mr. R. Dale Grimes
Mr. J. Richard Collier
Mr. Henry W. Walker
Mr. Michael A. McMahan
Mr. David G. Higney
Mr. Fredrick L. Hitchcock

U.S. Drought Monitor

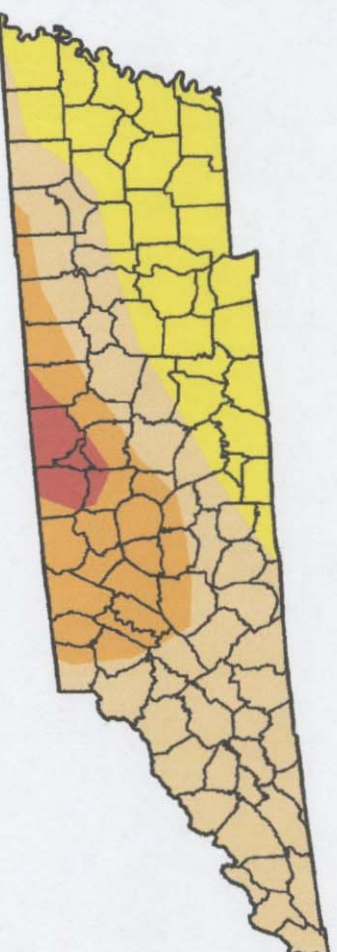
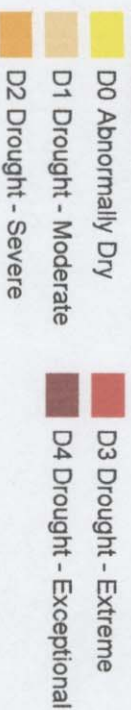
Tennessee

April 3, 2007
Valid 7 a.m. EST

Drought Conditions (Percent Area)

	None	D0-D4	D1-D4	D2-D4	D3-D4	D4
Current	0.0	100.0	67.0	22.2	3.7	0.0
Last Week (03/27/2007 map)	0.4	99.6	61.3	15.9	1.4	0.0
3 Months Ago (01/09/2007 map)	48.1	51.9	0.0	0.0	0.0	0.0
Start of Calendar Year (01/02/2007 map)	37.7	62.3	0.0	0.0	0.0	0.0
Start of Water Year (10/03/2006 map)	52.1	47.9	0.0	0.0	0.0	0.0
One Year Ago (04/04/2006 map)	65.7	34.3	0.0	0.0	0.0	0.0

Intensity:



The Drought Monitor focuses on broad-scale conditions. Local conditions may vary. See accompanying text summary for forecast statements.

<http://drought.unl.edu/dm>



Released Thursday, April 5, 2007
Author: Thomas Heddinghaus, CPC/NOAA

U.S. Drought Monitor

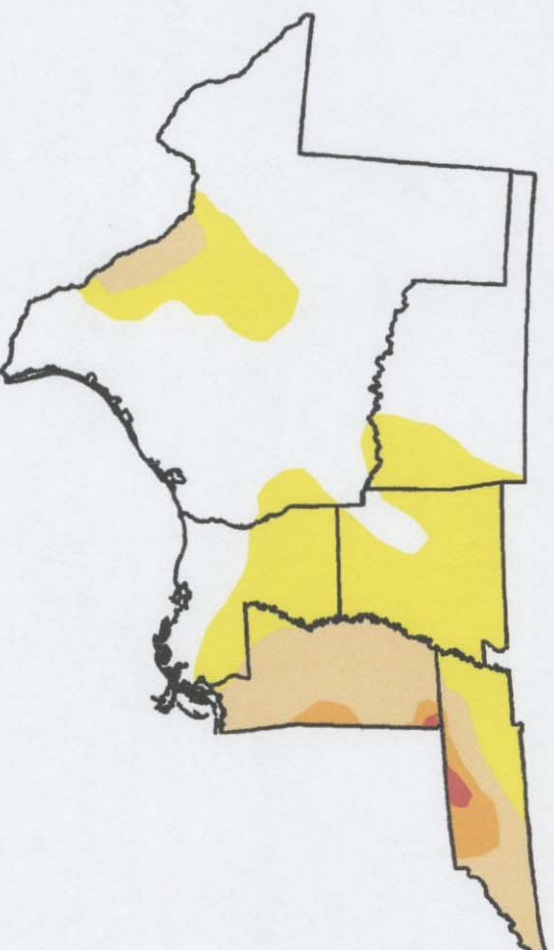
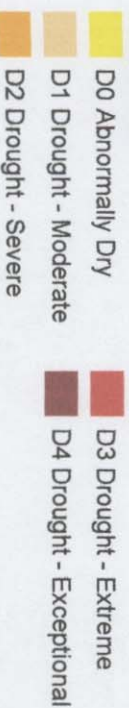
South

April 3, 2007
Valid 7 a.m. EST

Drought Conditions (Percent Area)

	None	D0-D4	D1-D4	D2-D4	D3-D4	D4
Current	57.2	42.8	15.6	2.6	0.4	0.0
Last Week (03/27/2007 map)	35.0	65.0	24.6	8.5	1.7	0.0
3 Months Ago (01/09/2007 map)	49.2	50.8	31.6	20.4	11.5	1.9
Start of Calendar Year (01/02/2007 map)	39.8	60.2	33.3	22.3	12.1	1.9
Start of Water Year (10/03/2006 map)	22.6	77.4	48.4	28.6	13.0	0.8
One Year Ago (04/04/2006 map)	20.9	79.1	66.1	46.9	11.3	6.4

Intensity:



The Drought Monitor focuses on broad-scale conditions. Local conditions may vary. See accompanying text summary for forecast statements.

<http://drought.unl.edu/dm>

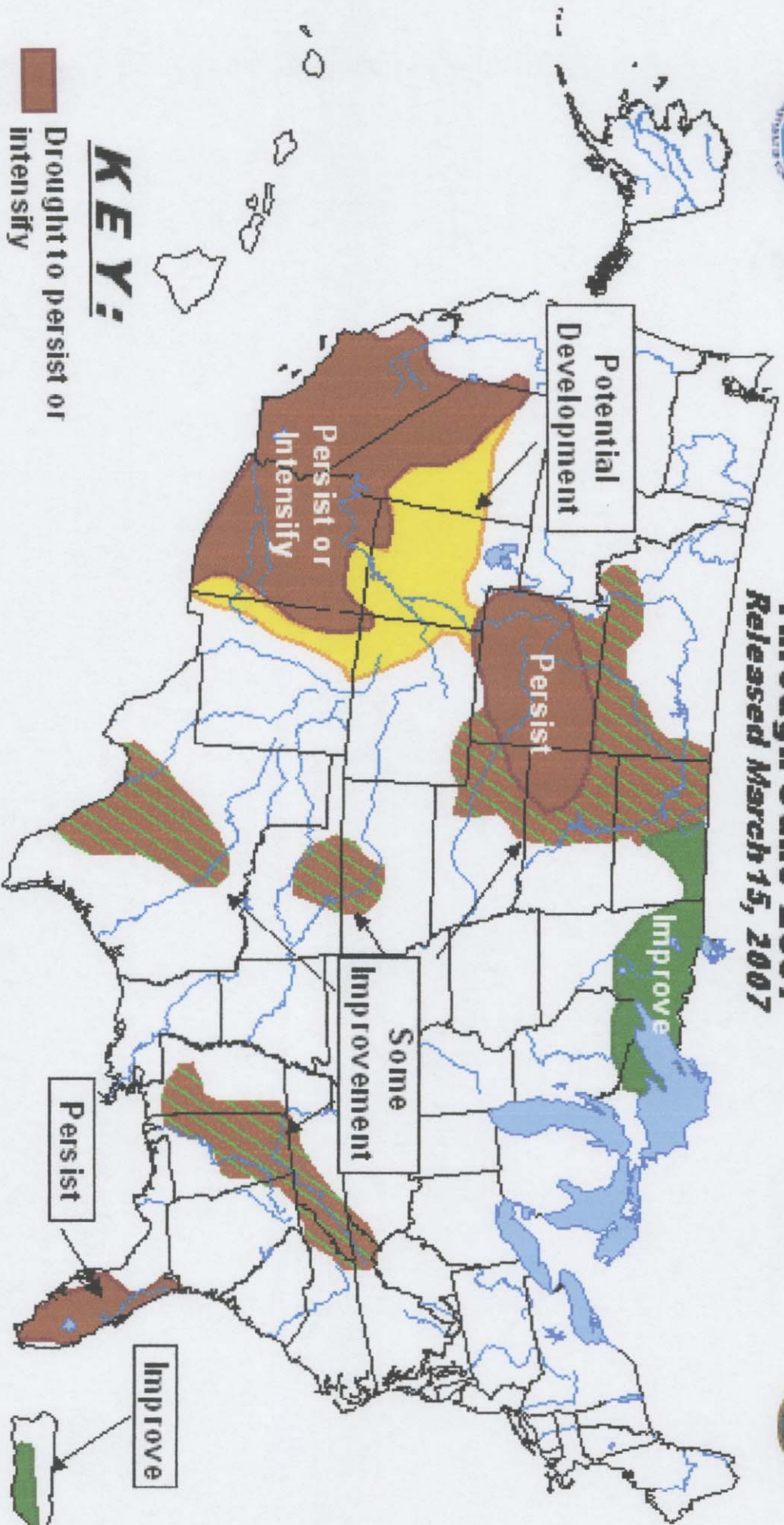


Released Thursday, April 5, 2007
Author: Thomas Heddinghaus, CPC/NOAA



U.S. Seasonal Drought Outlook

Through June 2007
Released March 15, 2007



KEY:

- Drought to persist or intensify
- Drought ongoing, some improvement
- Drought likely to improve, impacts ease
- Drought development likely

Depicts general, large-scale trends based on subjectively derived probabilities guided by numerous indicators, including short- and long-range statistical and dynamical forecasts. Short-term events -- such as individual storms -- cannot be accurately forecast more than a few days in advance, so use caution if using this outlook for applications -- such as crops -- that can be affected by such events. "Ongoing" drought areas are approximated from the Drought Monitor (D1 to D4). For weekly drought updates, see the latest Drought Monitor map and text. NOTE: the green improvement areas imply at least a 1-category improvement in the Drought Monitor intensity levels, but do not necessarily imply drought elimination.