

TENNESSEE WASTEWATER SYSTEMS, INC.
A PUBLIC UTILITY CO.

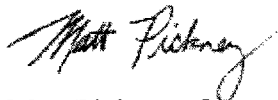
December 18, 2006

Honorable Sara Kyle
Chairman
Tennessee Regulatory Authority
460 James Robertson Parkway
Nashville, TN 37243-0505

RE: Replacement map for Mountain Folks Community (Docket #06-00276)

Dear Chairman Kyle:

Tennessee Wastewater Systems, Inc. desires to submit a replacement map to improve clarity.
Please replace the original map with the attached map.
Sincerely,

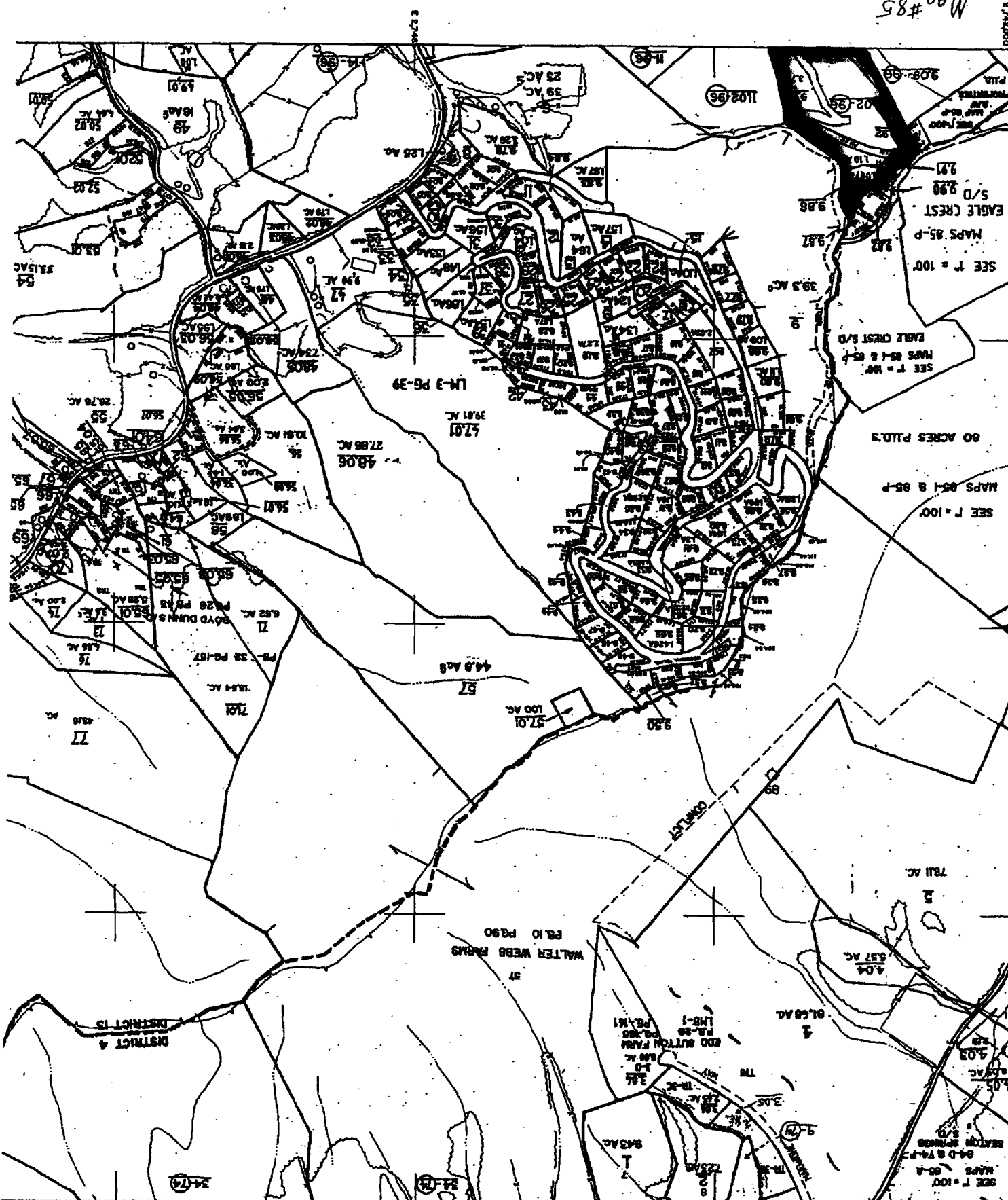


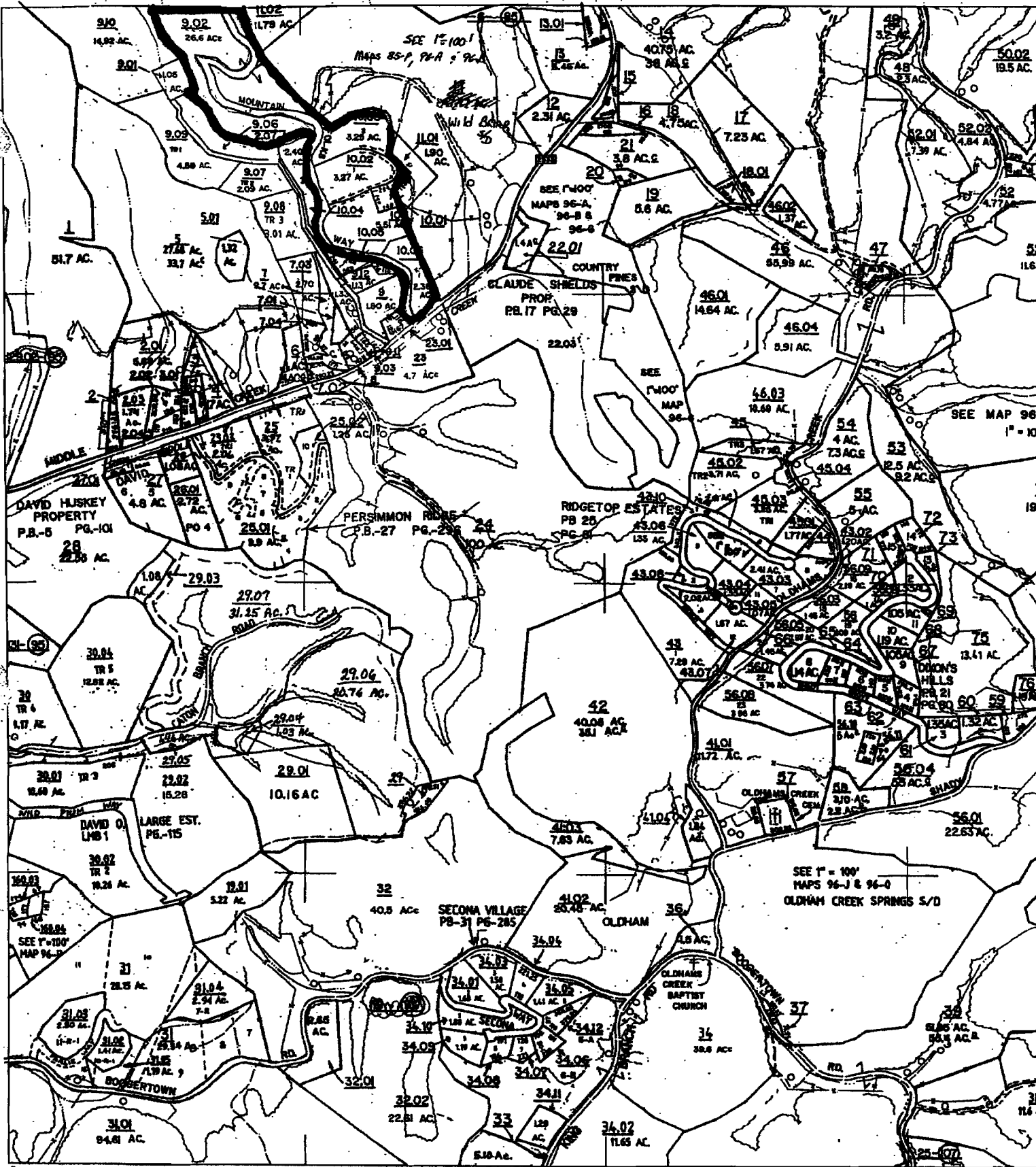
Matt Pickney, Operations Manager
Tennessee Wastewater Systems, Inc.

7638 River Road Pike Nashville TN 37209-5733
(615) 356-2880 Fax (615) 356-7295

Map #85

SECTION CORNER
TOTAL ACRES
PARCEL OUTLINE
SUB LOT NO
DISTRICT LINE
INSTRUMENT TRACT LINE
PARCEL NUMBER

[illegible]



Map #96

UNITED AERIAL MAPPING
SAN ANTONIO, TEXAS

PROPERTY MAP PREPARED BY
SABRE SYSTEMS & SERVICE

900 MEADOWS BLVD
DAYTON, OHIO 45424

5 PARCEL NUMBER
6 PARCEL HOOK
7 INTERIOR TRACT LINE
8 DISTRICT LINE
9 SUBD. LOT #
10 PARCEL OUTLINE
11 ADJ. TOTAL ACERAGE
12 SECTION CORNERS

13 PARCEL & CONTROLLING MAP #
14 IMPROVEMENT
15 FENCE
16 CEMETERY
17 CHURCH
18 SCHOOL
19 WOODED AREA
20 POND

ATN FOLK